

## FORKLIFT ATTACHMENTS

180 Degree Carrige Rotator	2
Hydraulic Push-off Attachment	3
Roller Forks	4
Drum Handling	5-11
Wheelie Bin Tippers	12
Jib Attachments	13-24
Container Access Ramps	25-26
Fork Extension Slippers	27
Fork Spreaders	28
Roll Prongs	29-30
Fork Tines	31

## FORWARD BULK BIN TIPPERS

Forklift Bulk Bin Tippers	32-33
---------------------------	-------

## CRANE AND OVERHEAD LIFTING

Drum Handling	34
---------------	----

## DRUM STORAGE SYSTEMS

Spill Bins	35-37
Drum Racks	38

## STORAGE CAGES

Stillage Cage	39
Pallet Cage	40

## Type XR2-25 Rotator

The 180 degree sideways rotator is ideal for load inverting and dumping applications. The XR2-25 Rotator features excellent vision with the operator benefiting from an unimpeded view over the attachment and improved side visibility.

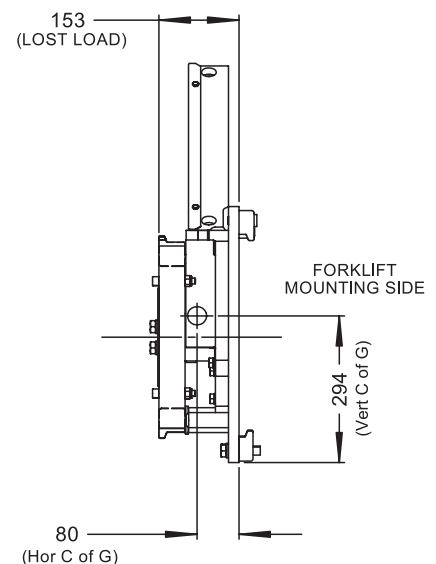
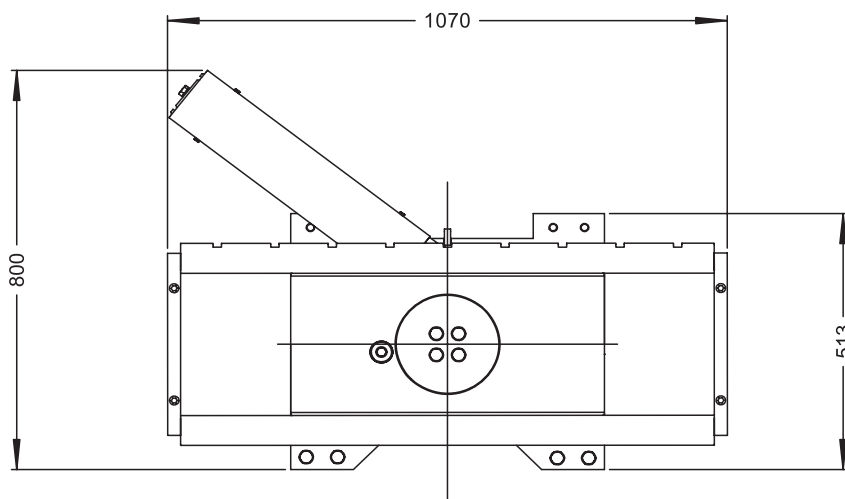
The single hydraulic cylinder produces a smooth, high torque rotation (to the left when seated on the forklift). Self-lubricating bearings and chrome shafts eliminate maintenance. Enamel paint finish.

- Safe Working Load: 2500 kg
- Load Centre: 500 mm
- Unit Weight: 185 kg
- Lost Load: 153 mm
- Mounting Class: Class II



180 Degree Rotation

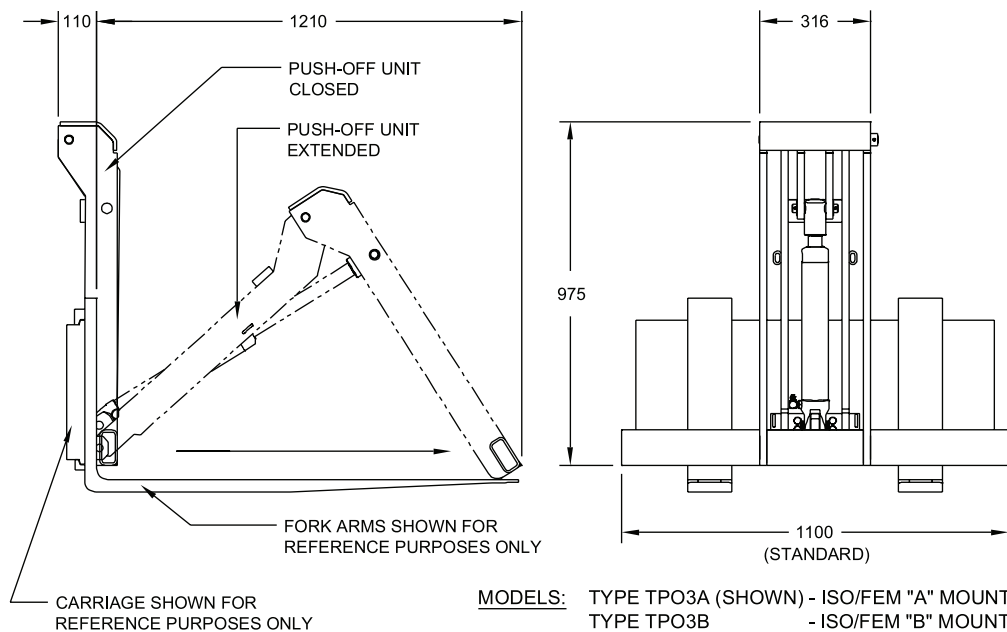
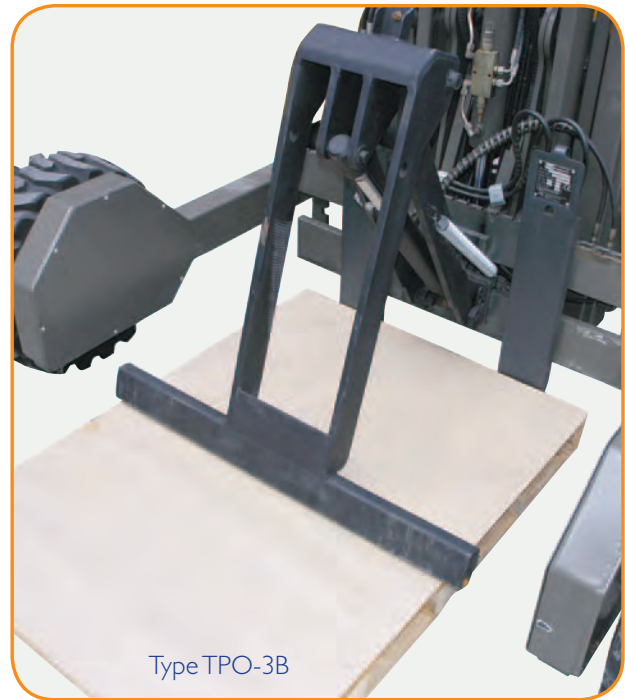
*Note: Fork arms not supplied, shown for illustration purposes only.*



## Type TPO-3 Push-off

The TPO3 Push-Off is ideally suited to the delivery of turf and landscape supplies where immediate retrieval of pallets is required. Used in conjunction with smooth top pallets, the hydraulically operated Push-Off is used to push the product from the pallet. One hydraulic function is required. The Push-Off is simple to operate with a smooth & efficient operation.

- Maximum operating pressure: 160 bar
- Maximum hydraulic flow: 30 litres/min
- Opening Range: 1210 mm
- Unit Weight: 110 kg
- Lost Load of 50mm (from front face of fork tines)
- Available to suit ISO/FEM "A" or "B" mount



### Type RFC Roller Forks

Perfect for container loading, Roller Forks allow for products such as bulk bags, cartons, and other bagged products to be transported and loaded using slip sheets where required, there by eliminating the use of pallets. Able to be fitted easily to most forklifts, with no additional hydraulics required. Simply replace the existing fork tines on the truck with the Roller Forks. Fitted with an ingenious roller design, these forks simply roll under the slip sheet. Once the goods are lifted, the rollers are retraced, ensuring the load is securely positioned.



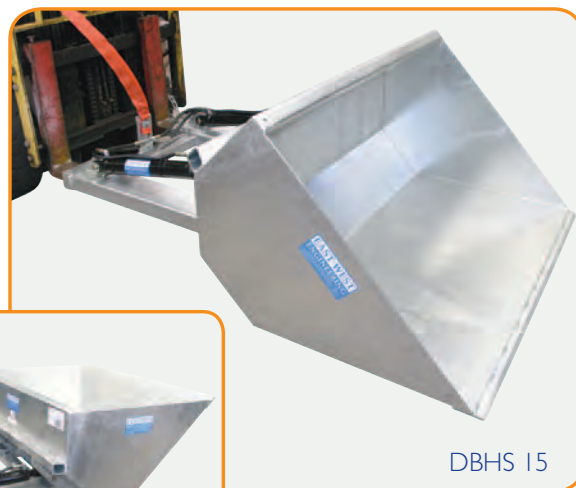
- Safe Working Load: 2000 kg
- Tine Length: 1200 mm
- Tine Dimensions: 210 mm x 48 mm
- Weight Per Pair: 155 kg

### Type DBHS Dirt Bucket

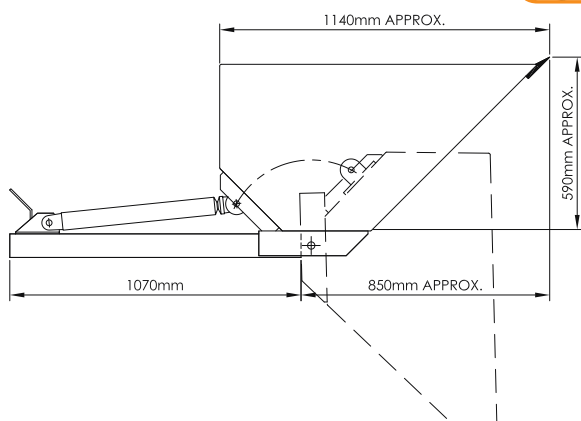
The DBHS Hydraulic Dirt Bucket is a slip-on attachment allowing quick connection to the forklift with the use of "Quick Connect" hydraulic couplings.

The hydraulic operation allows for full backwards tilt making the bucket suitable for liquid products. This bucket is manufactured with a hardened steel wear edge. Available in either galvanised or enamel paint finish.

- Fork Pocket Size: 165 mm x 65 mm
- Fork Pocket Centres: 750 mm
- Safe Working Load: 1000 kg



DBHS 15



Type	Capacity (cu. m)	Bucket Width (mm)	Unit Weight (kg)
DBHS 12	0.50	1200	315
DBHS 15	0.75	1500	355
DBHS 18	0.90	1800	395



### Type SDL Drum Lifter

Designed for standard 205 litre steel drums, the fully automatic clamping action enables safe and precise placement of drums without the operator having to leave the drivers seat. The drum is gripped by pushing the arms against the drum centre and driving forward with the forklift. The arms will engage around the drum and lock under the rolling hoop when raised.



Releasing Drum



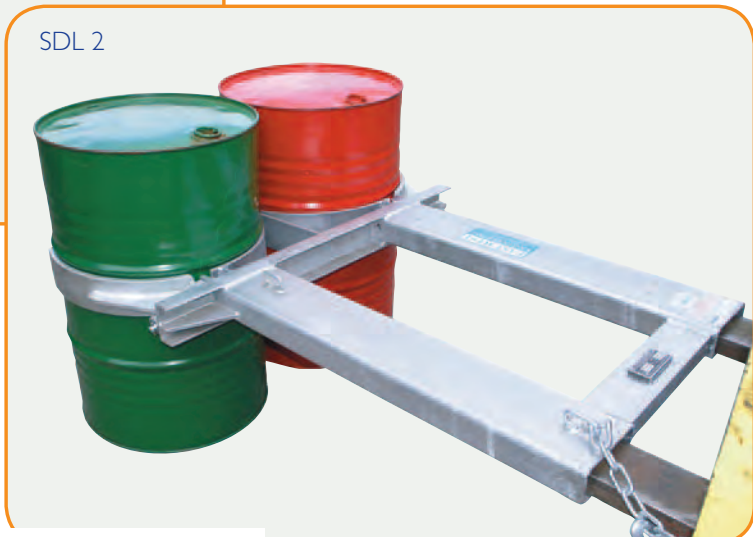
SDL 1

To release, lower the drum onto ground and continue to lower the forks whilst reversing the forklift. The SDL2 will handle either a single drum or 2 drums. Available in either painted or galvanised finish.

Type	No. of Drums	SWL (kg)	Fork Pocket Centres (mm)	Fork Pocket Size (mm)	Load Centre (mm)	Unit Weight (kg)
SDL 1	1	500	325	165 x 65	1340	62
SDL 2	2	1000	585	165 x 65	1340	75



SDL 2



### Type BGN Drum Lifter

Drum handling made easy. A good field of vision allows the operator to continually observe the drums being handled. The operator does not leave the drivers seat. The unique beak design provides a high clamping force, even when travelling over uneven ground.

Suitable for 205 litre steel drums, plastic drums, open top and ring lock drums. Available as a single or a two drum unit. A contoured rest acts at a point low enough down the drum to prevent damage to the drum and its labelling. Galvanised finish.

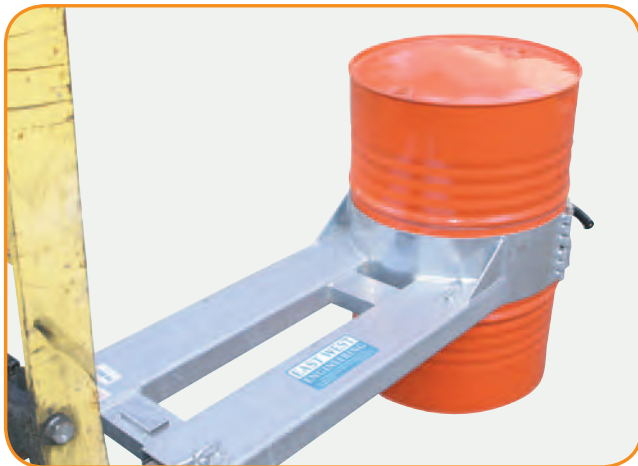


Type	No. of Drums	SWL (kg)	Fork Pocket Centres (mm)	Fork Pocket Size (mm)	Load Centre (mm)	Unit Weight (kg)
BGN 1	1	1000	250	185 x 60	1210	72
BGN 2	2	1500	600	185 x 60	1250	95



### Type DLI1000 Drum Lifter

The DLI1000 is the safest drum lifter available, with the drum being transported with 100% security. The drum is secured by a chain belly strap which is operated by an eccentric lock, which is then also secured by an additional securing pin. Galvanised finish.

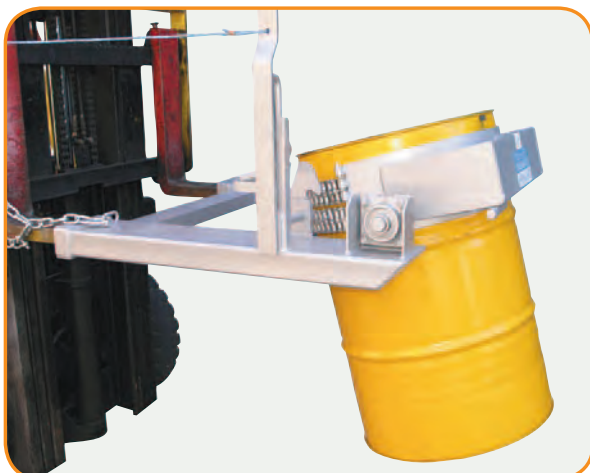


- Safe Working Load: 1000 kg
- Unit Weight: 60 kg
- Load Centre: 1160 mm
- Fork Pocket Size: 165 mm x 65 mm
- Fork Pocket Centres: 335 mm

### Type DC-T Drum Rotator

A fast and economical solution to emptying 205 litre drums. This unit is ideal for scrap and waste products.

A chain belly strap with an eccentric lock secures the drum firmly in position. To release the drum the operator pulls the draw chord from the drivers seat. Enamel paint finish.



- Safe Working Load: 500 kg
- Unit Weight: 100 kg
- Rotation: 180 degrees
- Load Centre: 1040 mm
- Fork Pocket Size: 165 mm x 65 mm
- Fork Pocket Centres: 825 mm

### Type DR-NH Drum Rotator

The DR-NH Drum Rotator is designed to lift and rotate 205 litre drums through 360 degrees. The drum is secured into the attachment with a locking belly strap. The rotation of the drum is done via a handle operated gearbox using minimum effort, allowing complete and controlled tipping.



- Safe Working Load: 500 kg
- Fork Pocket Size: 165 mm x 65 mm
- Fork Pocket Centres: 820 mm
- Load Centre: 930 mm
- Unit Weight: 100 kg

### Type DR-NC Drum Rotator

The DR-NC is fitted with chain operation to allow for drum rotation when lifted above chest height of the operator. Galvanised finish.



- Safe Working Load: 500 kg
- Fork Pocket Size: 165 mm x 65 mm
- Fork Pocket Centres: 820 mm
- Load Centre: 930 mm
- Unit Weight: 100 kg



### Type DRW-NH Drum Rotator

The DRW-NH Drum Rotator is designed to lift and rotate 205 litre drums through 360 degrees, and is ideal for long reach situations. It is also ideal for narrow carriage width forklifts where the fork tines cannot be positioned far enough apart for a standard DR-NH unit. Galvanised finish.

- Safe Working Load: 500 kg
- Fork Pocket Size: 165 mm x 65 mm
- Fork Pocket Centres: 485 mm
- Load Centre: 1640 mm
- Unit Weight: 130 kg



### Type DRW-NC Drum Rotator

Fitted with the chain operation, the DRW-NC allows for drum rotation when drum is lifted above chest height. Galvanised finish.

*Same specifications as DRW-NH*

- Unit Weight: 140 kg



### Type SW-NH Drum Rotator

The SW-NH is designed to lift and rotate steel 205 litre drums sideways to the direction of the forklift. The 360 degree rotation of the drum is via a handle operated reduction gearbox. Enamel paint finish.

- Safe Working Load: 500 kg
- Load Centre: 1385 mm
- Fork Pocket Size: 165 mm x 65 mm
- Fork Pocket Centres: 375 mm
- Unit Weight: 110 kg



### Type SW-NC Drum Rotator

The SW-NC is fitted with chain operation to allow for drum rotation when lifted above chest height. Enamel paint finish.

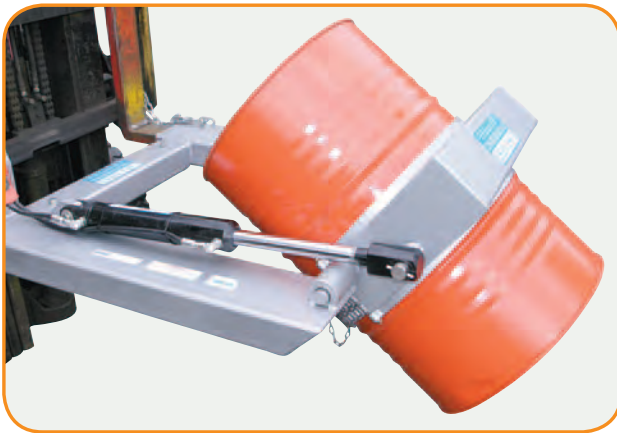
*Same specifications as SW-NH*

- Unit Weight: 120 kg



### Type DC-R2 Drum Rotator

The DC-R2 Hydraulic Drum Rotator is a heavy duty rotator designed to lift and rotate 205 litre steel drums. A chain belly strap holds the drum firmly in position, whilst the rotation is provided by the forklift hydraulics. One hydraulic function required. Enamel paint finish.



- Safe Working Load: 1000 kg
- Fork Pocket Size: 185 mm x 65 mm
- Fork Pocket Centres: 874 mm
- Unit Weight: 135 kg
- Load Centre: 1050 mm
- Rotation: 130 degrees



DC-R2 + PBO

### Type PBO Plastic Barrel Option

By replacing the standard belly strap, the PBO option will allow for plastic drums and barrels, as well as standard steel drums to be handled. The dual woven and chain combination belly straps hold the drum or barrel firmly in position.

Attachments which can be fitted with the PBO option include:

- DR-NH
- DR-NC
- CDR-500
- DRW-NH
- DRW-NC
- DLI 000
- SW-NH
- SW-NC
- DC-R2

**Note:** When PBO Option is fitted the Safe Working Load is reduced to 350kg.



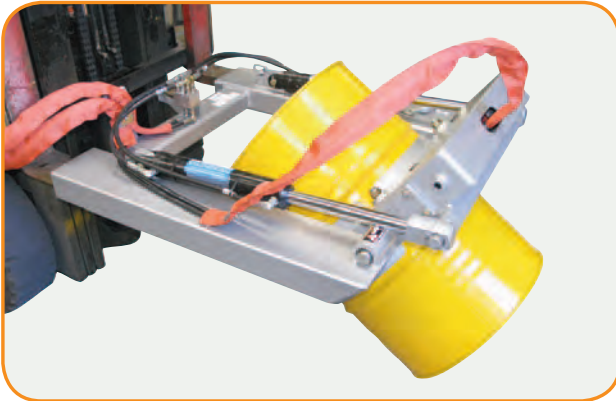
DR-NC + PBO



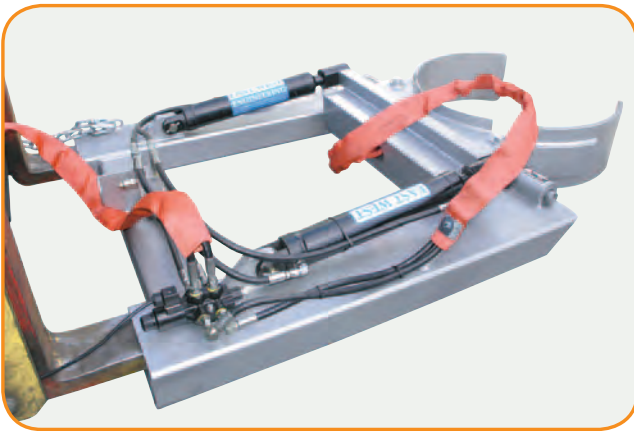
DR-NC + PBO

### Type DC-GR2 Drum Rotator

The DC-GR2 Hydraulic Drum Rotator is a heavy duty 205 litre drum lifter with hydraulic grab & 130 degree rotation ability. With 1 tonne lift capacity, this attachment is ideal for the recycling industry and for mining applications. This lifter is able to pick a single drum from a pallet of 4 without disturbing the other 3 drums. This unit is fitted with quick connect couplings for connection to the 3rd and 4th forklift hydraulic valves. Enamel paint finish.



- Safe Working Load: 1000 kg
- Load Centre: 1310 mm
- Fork Pocket Size: 185 mm x 65 mm
- Fork Pocket Centres: 875 mm
- Unit Weight: 175 kg



### Type DC-GR2 / EFD

A 12 volt electric flow diverter is fitted to this unit for use on forklifts where only one additional valve is available. This flow diverter splits the hydraulic oil flow to either the grab or rotate function of the attachment.

To activate the flow diverter, the forklift must be fitted with a push button switch mounted in the cabin, and the control wiring extending to the carriage for connection to the flow diverter.

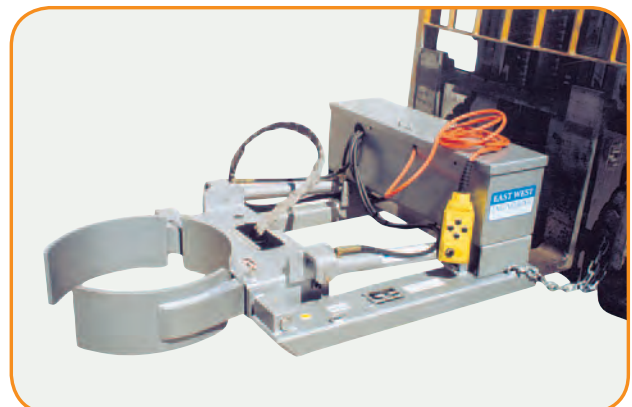
**Unit weight 180kg.**

### Type DC-GR2 / HPP

The DC-GR2/HPP is fitted with a self contained battery / electric operated hydraulic power pack, eliminating the need to connect to the hydraulic system of the forklift.

This self contained unit includes a 12 volt hydraulic pump, battery and battery charger unit. Operation of the HPP unit is via pendant control, allowing the forklift driver to operate the attachment from the drivers seat.

**Unit weight 295kg.**





### Type NWB-T Wheelie Bin Tipper

Suitable for emptying 240 litre wheelie bins. The bin is wheeled into the tipper and secured with safety chains. The 180 degree tipping operation is simple and safe with the operator never having to leave the seat during the tipping cycle. Enamel paint finish.



NWB-T2



NWB-T1

Type	No. of bins	SWL (kg)	Fork Pocket Size (mm)	Fork pocket centres (mm)	Load Centre (mm)	Unit Weight (kg)
NWB-T1	1	500	165 x 65	340	1200	100
NWB-T2	2	1000	165 x 65	340	1200	150



WB-240



WB-660

### Type WB Wheelie Bin Tipper

With two models available, one for 240 litre and another for 660 litre wheelie bins, the WB style tipper is operated from the forklift drivers seat by pull-cord. The bin is secured in the wheelie bin cradle with safety chains. Enamel paint finish.



WB-240 Tipped

Type	No. of bins	SWL (kg)	Fork Pocket Size (mm)	Fork pocket centres (mm)	Load Centre (mm)	Unit Weight (kg)
WB-240	1 x 240 litre	500	165 x 65	815	1000	100
WB-660	1 x 660 litre	500	165 x 65	485	1700	140



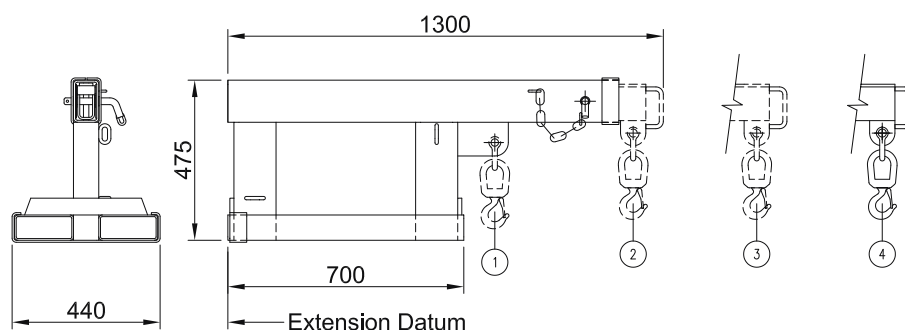
### Type FJS2.5 Fixed Jib Short - 2.5 Tonne

The FJS2.5 Fixed Jib allows for additional lifting height with the extension beam being raised above the fork pockets. The overall length when retracted is 1.3 metres, and when extended is 2 metres. Galvanised finish.

- Safe Working Load: 2500 kg Max
- Fork Pocket Size: 165 mm x 65 mm
- Fork Pocket Centres: 250 mm
- Unit Weight: 100 kg



Safe Working Load (SWL) per position				
POSITION	1	2	3	4
EXTENSION (mm)	790	1200	1580	1960
SWL (kg)	2500	1200	900	750

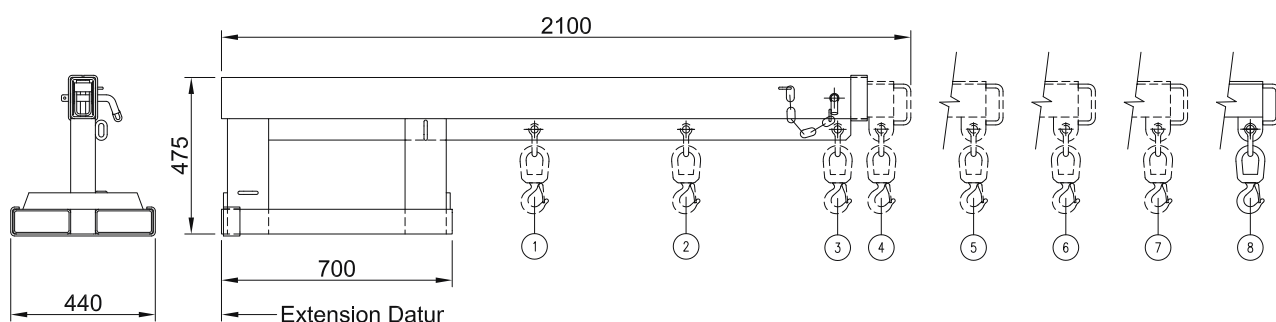


### Type FJL2.5 Fixed Jib Long - 2.5 Tonne

The FJL2.5 has a 3.5 metre extension which allows for long reach lifts. The overall jib length when retracted is 2.1 metres. Galvanised finish.

- Safe Working Load: 2500 kg Max
- Fork Pocket Size: 165 mm x 65 mm
- Fork Pocket Centres: 250 mm
- Unit Weight: 130 kg

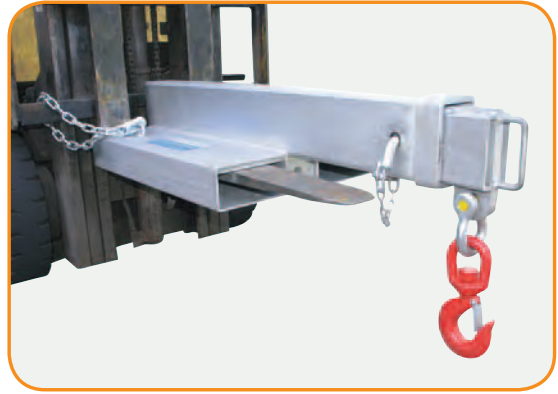
Safe Working Load (SWL) per position								
POSITION	1	2	3	4	5	6	7	8
EXTENSION (mm)	950	1410	1870	2000	2380	2760	3140	3520
SWL (kg)	2500	2500	1900	1650	1250	650	380	240



## Type FJCS45 Fixed Jib Short - 4.5 Tonne

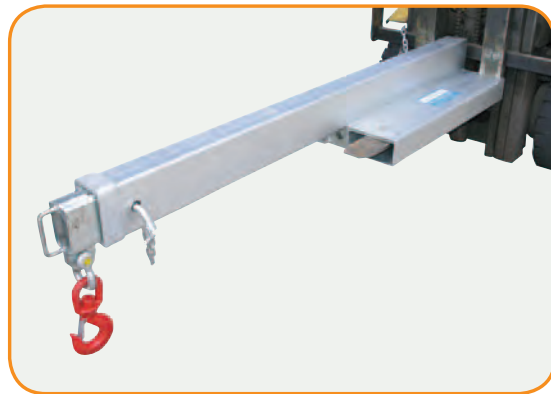
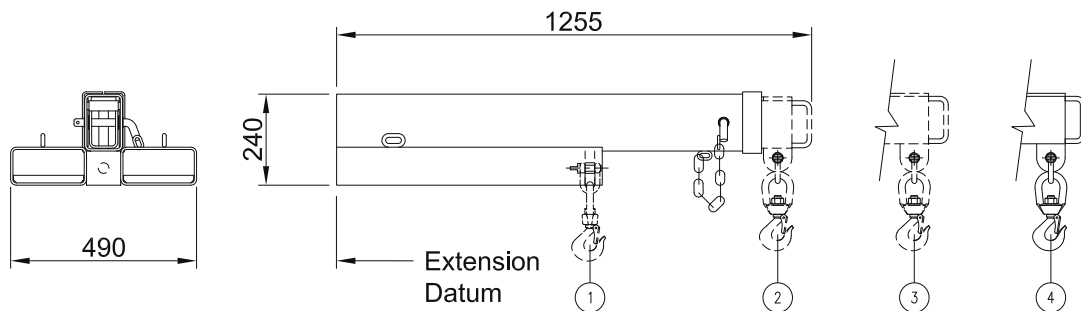
The FJCS45 Fixed Jib is designed as an affordable general purpose jib able to manoeuvre in confined spaces, with a 1.9 metre reach when fully extended. The overall jib length when closed is 1.25 metres. Galvanised finish.

- Safe Working Load: 4500 kg Max
- Fork Pocket Size: 185 mm x 65 mm
- Fork Pocket Centres: 290 mm
- Unit Weight: 95 kg



**Safe Working Load (SWL) per position**

POSITION	1	2	3	4
EXTENSION (mm)	670	1165	1545	1925
SWL (kg)	4500	2900	1300	750



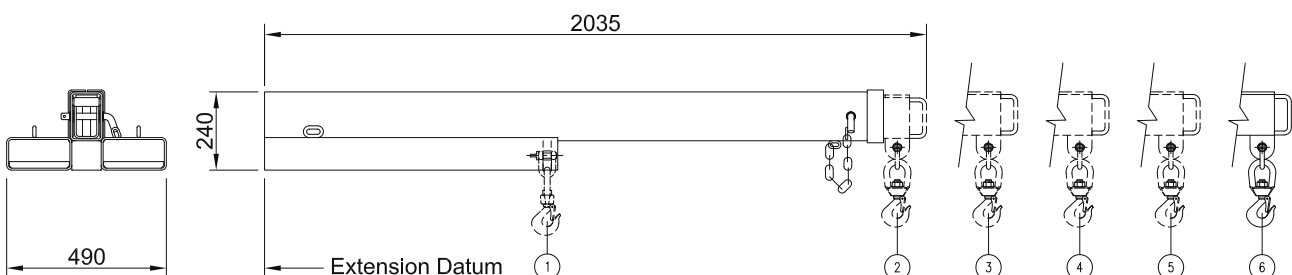
## Type FJCL45 Fixed Jib Long - 4.5 Tonne

The FJCL45 Fixed Jib has a 3.5 metre reach when fully extended. Overall length when closed is 2.0 metres. Galvanised finish.

- Safe Working Load: 4500 kg Max
- Fork Pocket Size: 185 mm x 65 mm
- Fork Pocket Centres: 290 mm
- Unit Weight: 140 kg

**Safe Working Load (SWL) per position**

POSITION	1	2	3	4	5	6
EXTENSION mm)	870	1945	2325	2705	3085	3465
SWL (kg)	4500	1300	750	560	380	200



## Type FJS5 Fixed Jib Short - 5 Tonne

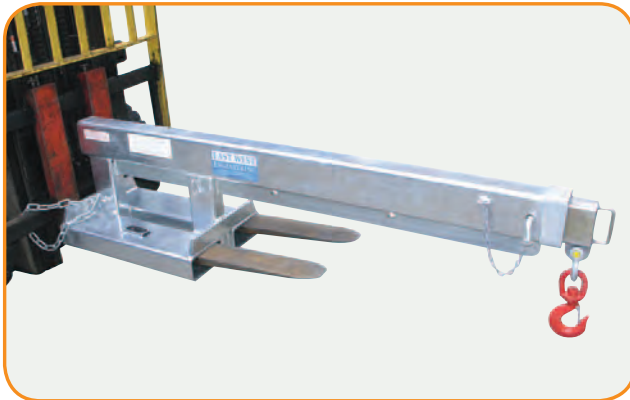
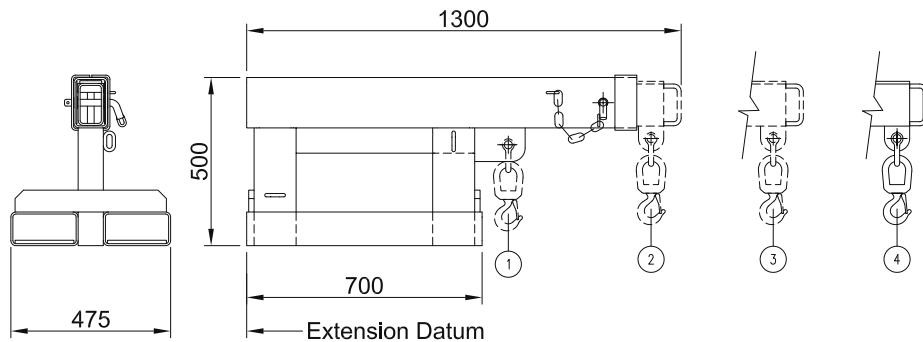
The FJS5 Fixed Jib has a 1.96 metre reach when fully extended, and an overall length of 1.3 metres when retracted. The jib is secured to the forklift by a safety chain. Galvanised finish.

- Safe Working Load: 4750 kg Max
- Fork Pocket Size: 185 mm x 75 mm
- Fork Pocket Centres: 275 mm
- Unit Weight: 130 kg



**Safe Working Load (SWL) per position**

POSITION	1	2	3	4
EXTENSION (mm)	780	1200	1580	1960
SWL (kg)	4750	2400	1800	1500



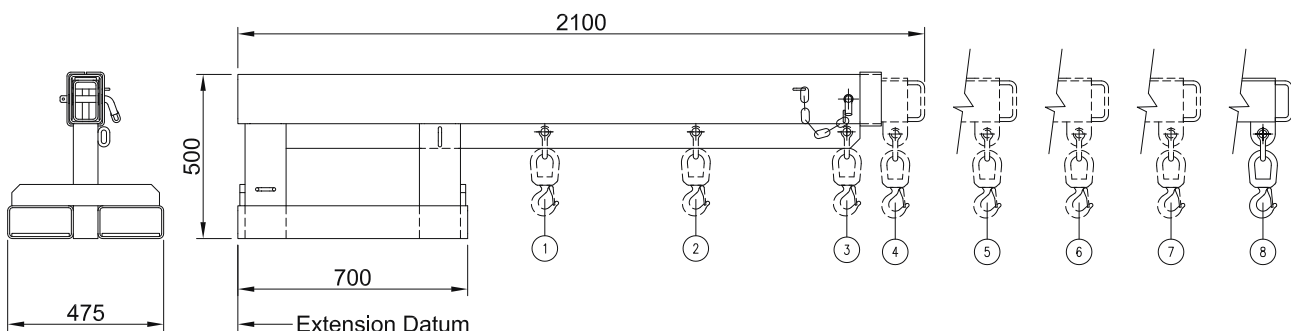
## Type FJL5 Fixed Jib Long - 5 Tonne

The FJL5 Fixed Jib has a 3.5 metre reach when fully extended, and an overall jib length when retracted of 2.1 metres. Galvanised finish.

- Safe Working Load: 4750 kg Max
- Fork Pocket Size: 185 mm x 75 mm
- Fork Pocket Centres: 275 mm
- Unit Weight: 170 kg

**Safe Working Load (SWL) per position**

POSITION	1	2	3	4	5	6	7	8
EXTENSION (mm)	935	1395	1855	2000	2380	2760	3140	3520
SWL (kg)	4750	4275	3800	3300	2500	1300	760	480



### SFJS7.5 Fixed Jib Short - 7.5 Tonne

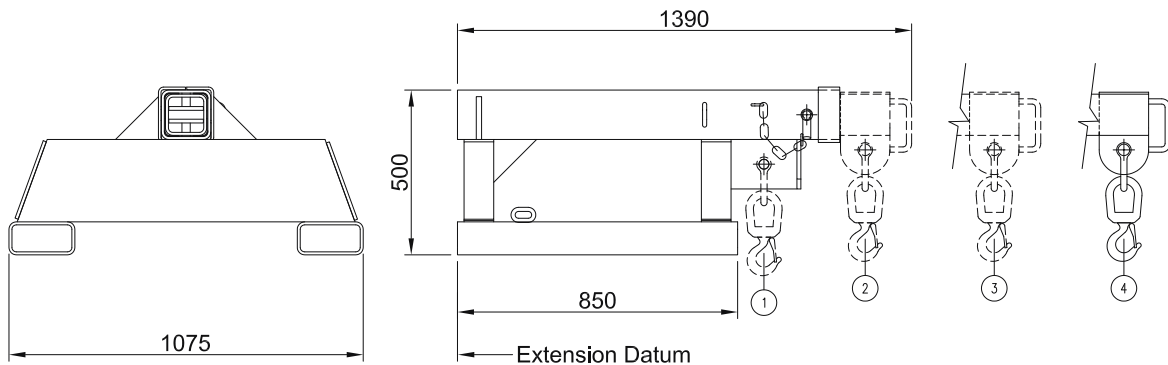
A general purpose jib suitable for larger forklifts, the SFJS7.5 is fitted with wide pocket centres, also suited for forklifts fitted with special hydraulic tine positioners. Overall jib length when retracted is 1.39 metres. Galvanised finish.

- Safe Working Load: 7500 kg Max.
- Fork Pocket Size: 180 mm x 80 mm
- Fork Pocket Centres: 875 mm
- Unit Weight: 320 kg



**Safe Working Load (SWL) per position**

POSITION	1	2	3	4
EXTENSION (mm)	930	1245	1625	2005
SWL (kg)	7500	3600	2700	2250



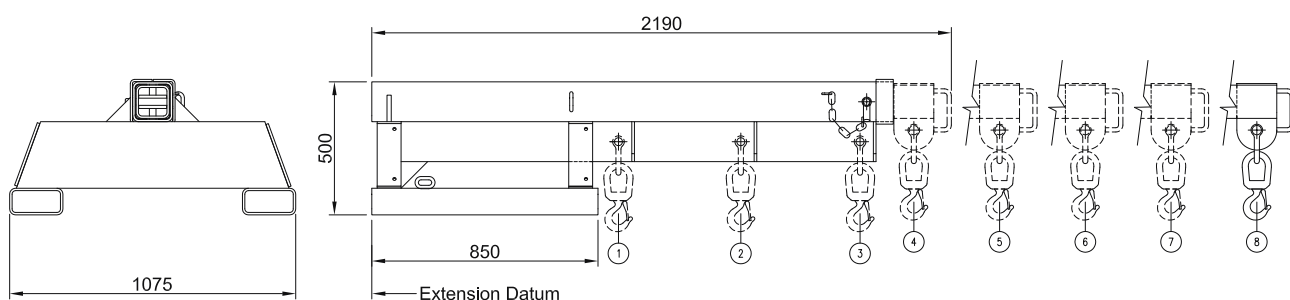
### SFJL7.5 Fixed Jib Long - 7.5 Tonne

The SFJL7.5 Fixed Jib has a 3.56 metre reach when fully extended. The overall jib length when closed is 2.19 metres. This jib is also fitted with wide fork pocket centres. Galvanised finish.

- Safe Working Load: 7500 kg Max.
- Fork Pocket Size: 180 mm x 80 mm
- Fork Pocket Centres: 875 mm
- Unit Weight: 450 kg

**Safe Working Load (SWL) per position**

POSITION	1	2	3	4	5	6	7	8
EXTENSION (mm)	930	1385	1835	2045	2425	2805	3185	3565
SWL (kg)	7500	6410	5700	4950	3750	1950	1140	720





## SFJS10 Fixed Jib Short - 10 Tonne

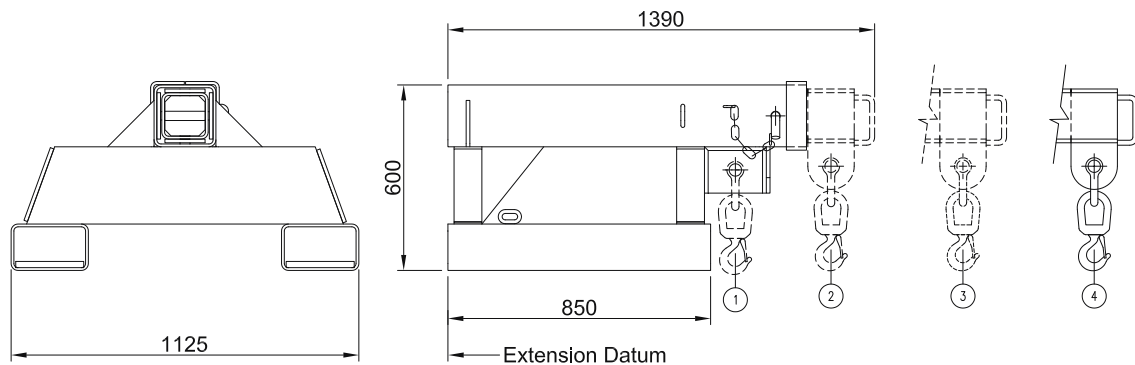
The SFJS10 Fixed Jib is the largest capacity jib in the range. Fitted with wide pocket centres, this jib is also for forklifts fitted with special hydraulic tine positioners. Maximum extension is 2 metres, with the overall jib length when retracted of 1.39 metres. Galvanised finish.

- Safe Working Load: 10,000 kg Max.
- Fork Pocket Size: 230 mm x 110 mm
- Fork Pocket Centres: 875 mm
- Unit Weight: 400 kg



**Safe Working Load (SWL) per position**

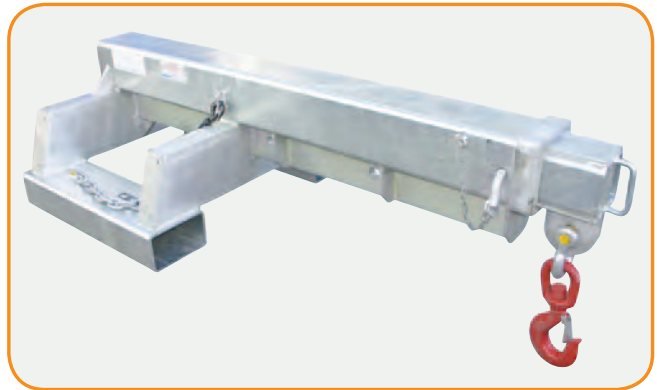
POSITION	1	2	3	4
EXTENSION (mm)	930	1245	1625	2005
SWL (kg)	10,000	4800	3600	3000



## SFJL10 Fixed Jib Long - 10 Tonne

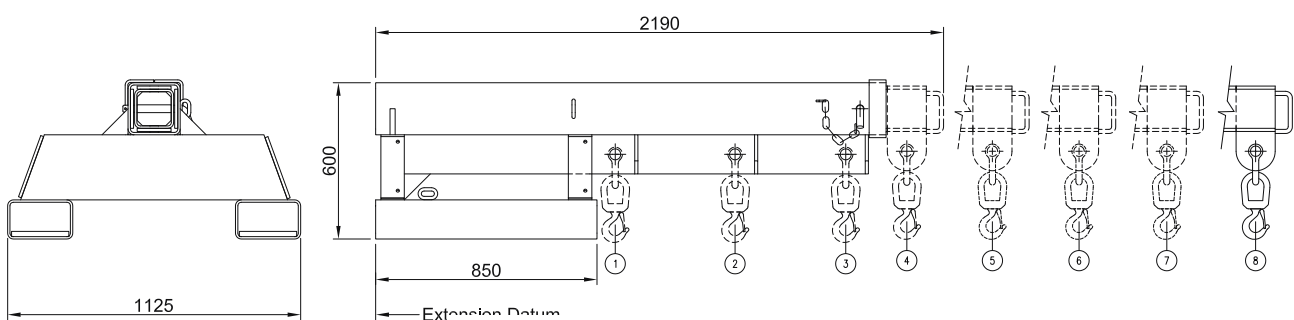
This jib has a 3.56 metre reach when fully extended, and is also fitted with wide fork pocket centres. The overall jib length when closed is 2.19 metres. Galvanised finish.

- Safe Working Load: 10,000 kg Max.
- Fork Pocket Size: 230 mm x 110 mm
- Fork Pocket Centres: 875 mm
- Unit Weight: 515 kg



**Safe Working Load (SWL) per position**

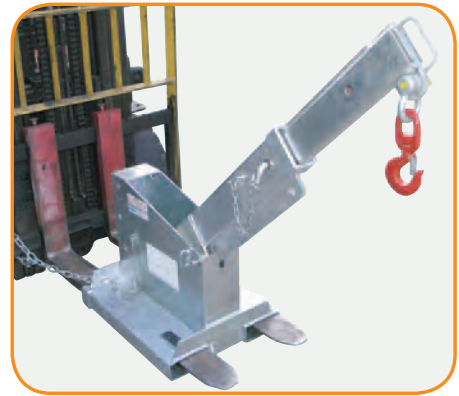
POSITION	1	2	3	4	5	6	7	8
EXTENSION (mm)	920	1380	1805	2045	2425	2805	3185	3565
SWL (kg)	10,000	8550	7600	6600	5000	2600	1520	960



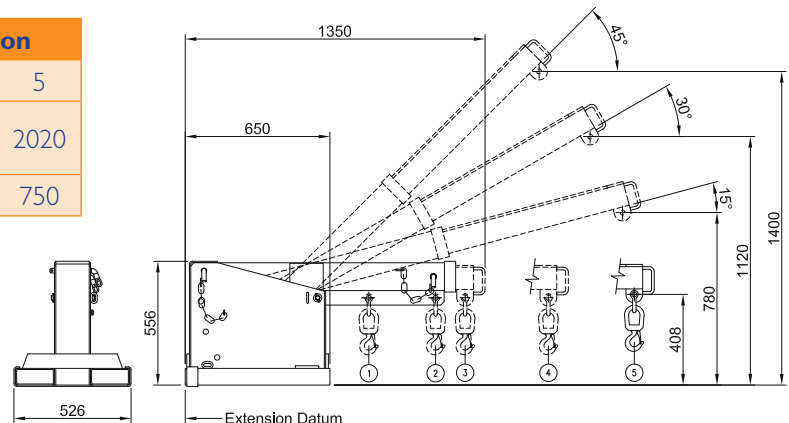
## Type TJS2.5 Tilt Jib Short - 2.5 Tonne

The TJS2.5 Tilting Jib allows for additional height, compensating for length of the hook and slings when lifting. The jib boom can be set at 3 angled positions as well as level. Jib also offers 5 different hook positions, with a 2 metre maximum reach. Galvanised finish.

- Safe Working Load: 2500 kg Max
- Fork Pocket Size: 165 mm x 65 mm
- Fork Pocket Centres: 337 mm
- Unit Weight: 130 kg



Safe Working Load (SWL) per position					
POSITION	1	2	3	4	5
EXTENSION (mm)	825	1125	1260	1640	2020
SWL (kg)	2500	1800	1200	900	750



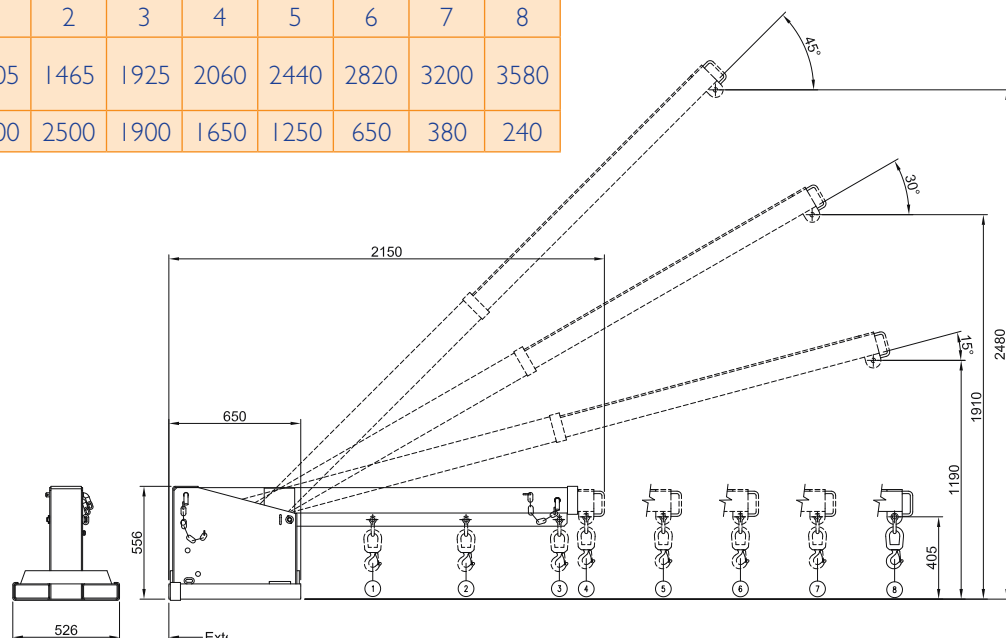
## Type TJL2.5 Tilt Jib Long - 2.5 Tonne

With a maximum reach of 3.58 metres and an additional height of 2.4 metres when fully extended, the TJL2.5 is extremely versatile. 8 hook positions available, as well as 3 different angle positions. Galvanised finish.

- Safe Working Load: 2500 kg Max
- Fork Pocket Size: 165 mm x 65 mm
- Fork Pocket Centres: 337 mm
- Unit Weight: 180 kg



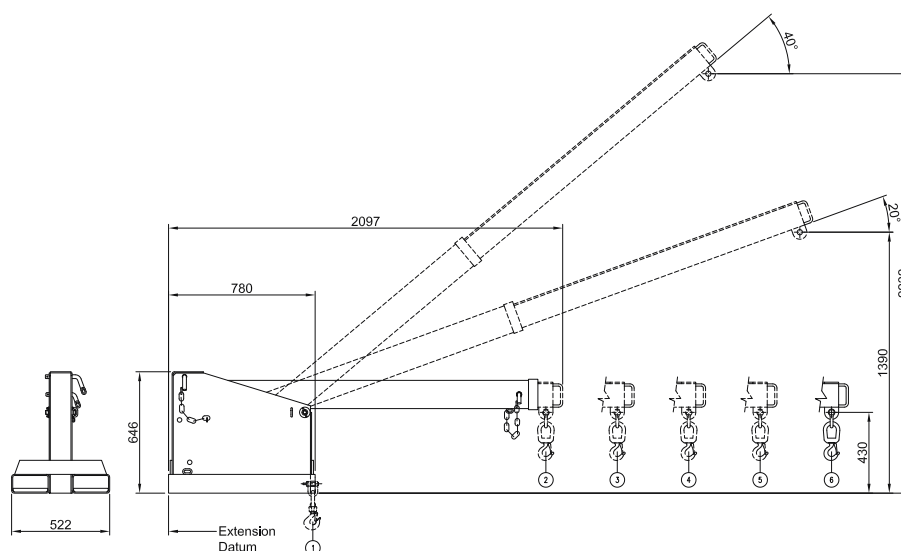
Safe Working Load (SWL) per position								
POSITION	1	2	3	4	5	6	7	8
EXTENSION (mm)	1005	1465	1925	2060	2440	2820	3200	3580
SWL (kg)	2500	2500	1900	1650	1250	650	380	240



## Type TJCL45 Tilting Jib Long - 4.5 Tonne

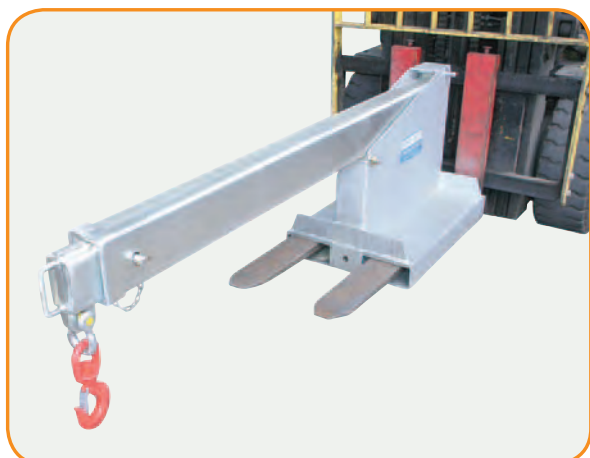
The TJCL45 Tilt Jib is one of the most versatile forklift jib attachments in our range, allowing extra height to 2.23 metres, with a 3.53 metre reach when fully extended. This slip-on attachment is held to the forklift by a safety chain. The overall jib length when closed is 2.1 metres. Galvanised finish.

- Safe Working Load: 4500 kg Max
- Fork Pocket Size: 185 mm x 65 mm
- Pocket Centres: 322 mm
- Unit Weight: 190 kg



**Safe Working Load (SWL) per position**

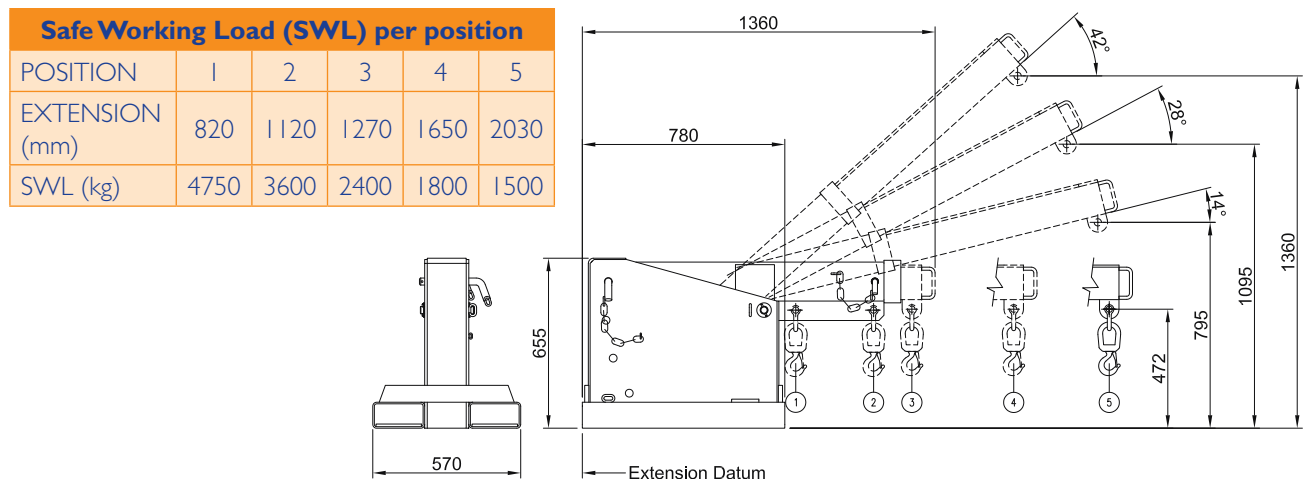
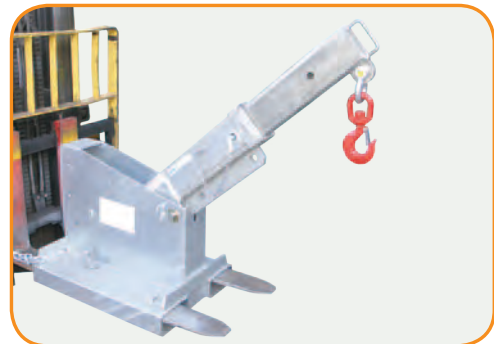
POSITION	1	2	3	4	5	6
EXTENSION (mm)	770	2010	2390	2770	3150	3530
SWL (kg)	4500	1100	630	470	300	150



## Type TJS5 Tilting Jib Short - 5 Tonne

The TJS5 Tilting Jib can be set at 3 angled positions as well as level. Jib also offers 5 different hook positions, with a 2 metre maximum reach. Galvanised finish.

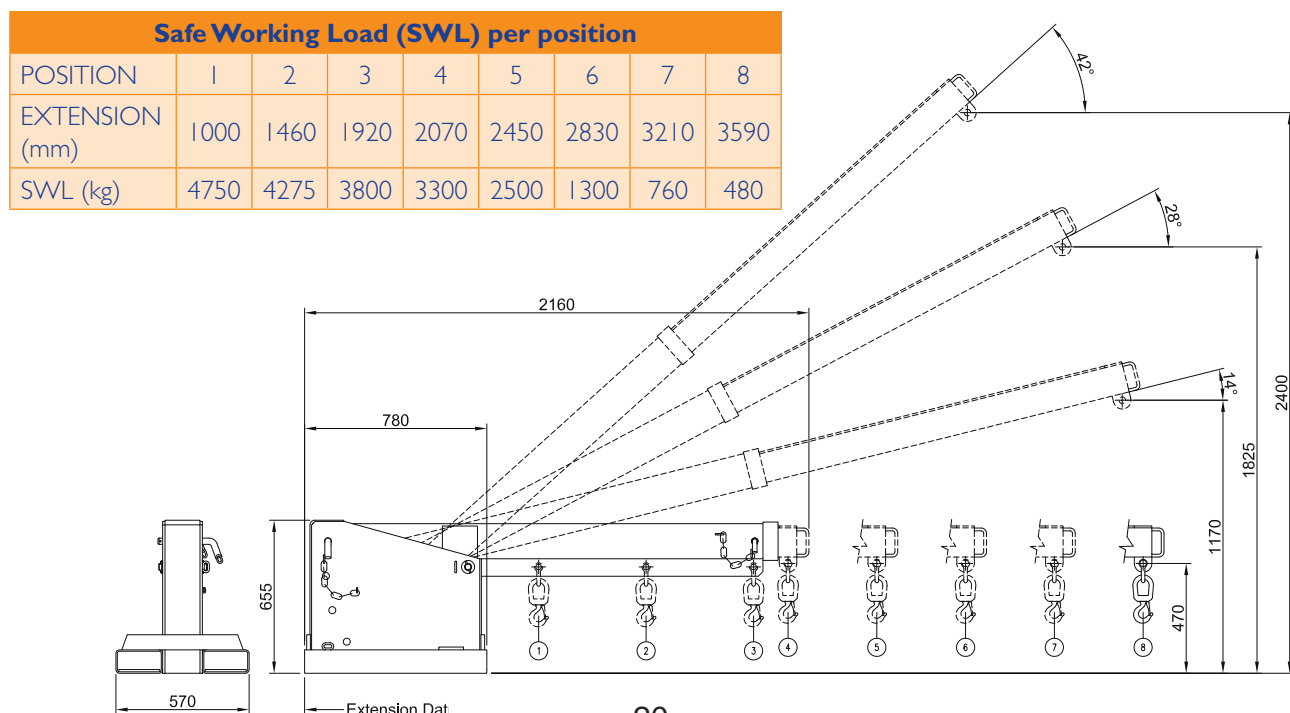
- Safe Working Load: 4750 kg Max
- Fork Pocket Size: 185 mm x 75 mm
- Fork Pocket Centres: 370 mm
- Unit Weight: 180 kg



## Type TJL5 Tilting Jib Long - 5 Tonne

With a maximum reach of 3.6 metres and an additional height of 2.4 metres when fully extended, the TJL5 is extremely versatile. 8 hook positions available, as well as 3 different angle positions. Galvanised finish.

- Safe Working Load: 4750 kg Max
- Fork Pocket Size: 185 mm x 75 mm
- Fork Pocket Centres: 370 mm
- Unit Weight: 240 kg



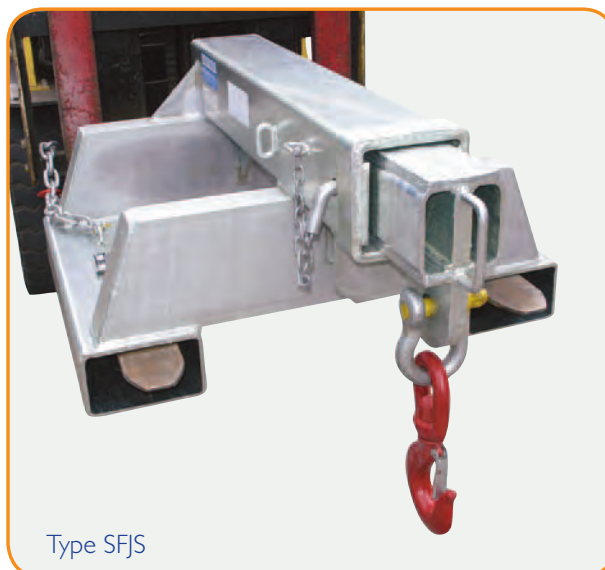


### Wide Fork Pocket “S” series jibs

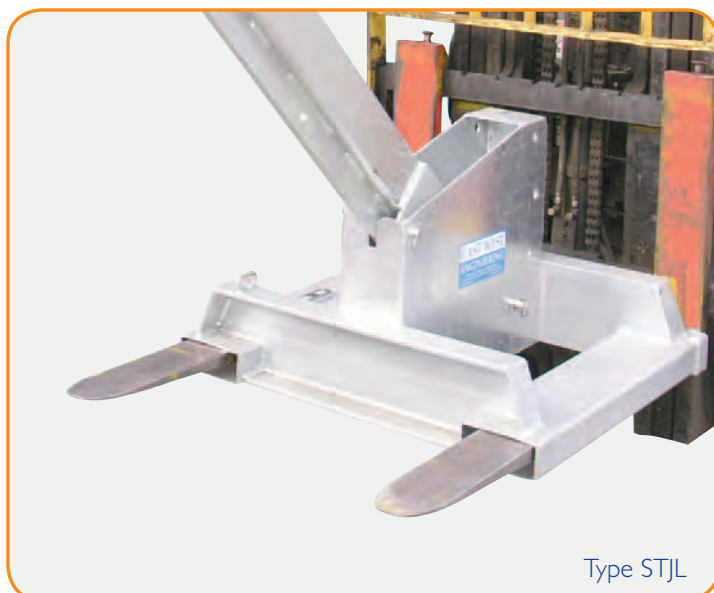
These jibs are fitted with the fork pocket centres set at a wider measurement than the standard range. Whilst they can be used on standard forklifts, these jibs are manufactured to suit forklifts which cannot position the fork tines for the standard range of jibs, such as forklifts fitted with special hydraulic fork positioners. The wide pocket option is available on all 2.5 tonne and 5 tonne jibs.

**Note:** All 7.5 tonne and 10 tonne jibs are manufactured with wide pockets as standard.

(Refer to pages 18-19 for details)



Type SFJS



Type STJL



Type SFJL

Type	Pocket Size (mm)	Pocket Centres (mm)	Overall Width (mm)	Unit Weight (kg)
SFJS 2.5	165 x 65	740	930	125
SFJL 2.5	165 x 65	740	930	155
SFJS 5	185 x 75	875	1075	160
SFJL 5	185 x 75	875	1075	200

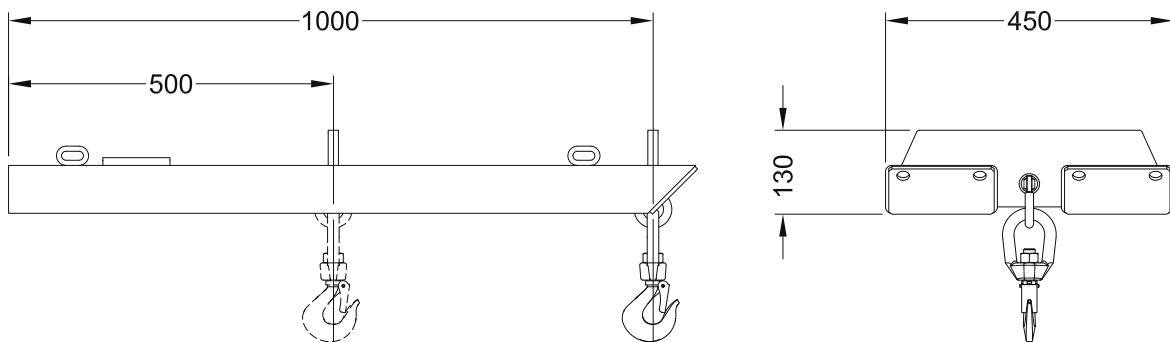
STJS 2.5	165 x 65	740	930	160
STJL 2.5	165 x 65	740	930	205
STJS 5	185 x 75	875	1075	210
STJL 5	185 x 75	875	1075	270

The information outlined in the above table is for the “S” wide pocket version of the standard range of 2.5 tonne and 5 tonne jibs. Only the pocket spacing, overall width and weight varies from the standard attachment. Please refer to standard model specifications for Safe Working Load (SWL) information.

### Type SJ2 Jib

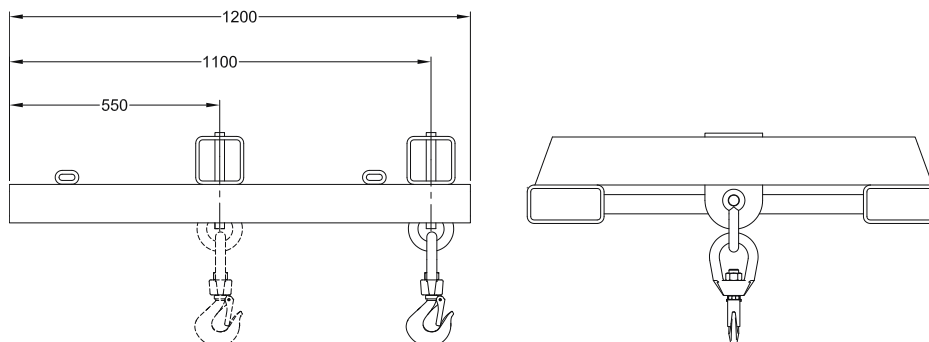
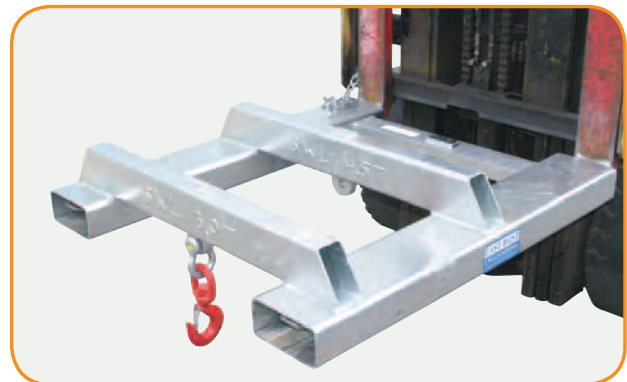
Simple slip on jib attachment, suitable for most forklifts. Two lifting points available, and supplied with one safety swivel hook. Galvanised finish.

- Safe Working Load: 2000 kg
- Fork Pocket Size: 165 mm x 65 mm
- Fork Pocket Centres: 275 mm
- Unit Weight: 45 kg



### Type SJW Wide Pocket Jib

The SJW style jib is fitted with wide spaced fork pockets, and provides 2 lifting positions 550 mm apart. This is a simple slip on style jib, and is supplied with safety swivel hook. Galvanised finish.



Type	SWL (kg) / 550mm	SWL (kg) / 1100mm	Fork pocket size (mm)	Fork Pocket Centres (mm)	Unit weight (kg)
SJW 2.5	2500	1500	165 x 65	740	75
SJW 4.5	4500	3000	180 x 80	875	140
SJW 7	7000	5000	180 x 80	875	210
SJW II	11,000	8000	230 x 110	875	260

### Type SBJ6 Battery Removal Jib

This jib is used for the removal and placement of battery packs into electric operated forklifts. Supplied with multiple lifting points and supplied with 4 slings, this unit can be used for both 2 point and 4 point lift battery packs. Galvanised finish.



- Safe Working Load: 2000 kg
- Unit Weight: 64 kg
- Load Centre: 654 mm
- Fork Pocket Size: 165 x 65 mm
- Fork Pocket Centres: 255 mm
- Hook Centres: 510 mm x 916 mm

### Type GNJ Carriage Mounted Jib

The GNJ Carriage Mounted Jib is a heavy duty carriage mounted jib that offers height and manoeuvrability. This jib mounts to a standard forklift carriage and comes with an optional support stand upon request. Enamel paint finish.



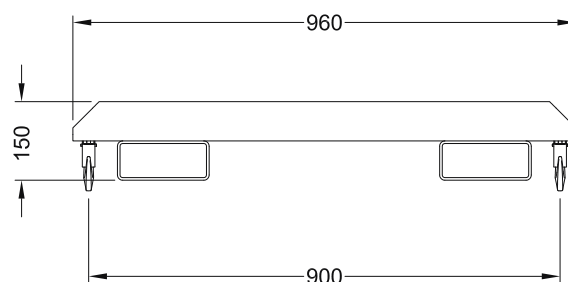
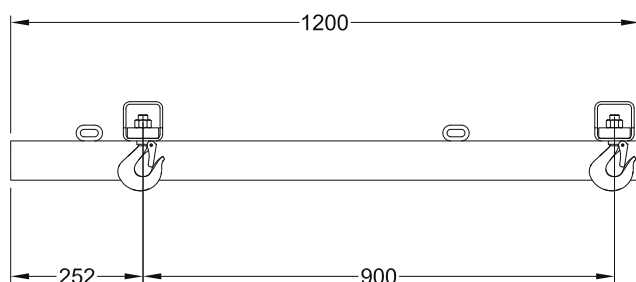
Optional Stand

Type	Mounting Class	SWL (kg) / 600mm	SWL (kg) / 900mm	SWL (kg) / 1200mm	Unit weight (kg)
GNJ 2.5	Class II	2500	2000	1500	130
GNJ 4.5	Class III	4500	3500	2500	150
GNJ 6	Class IV	6000	5000	4000	170

## Type BJFL-I Bulk Bag Jib

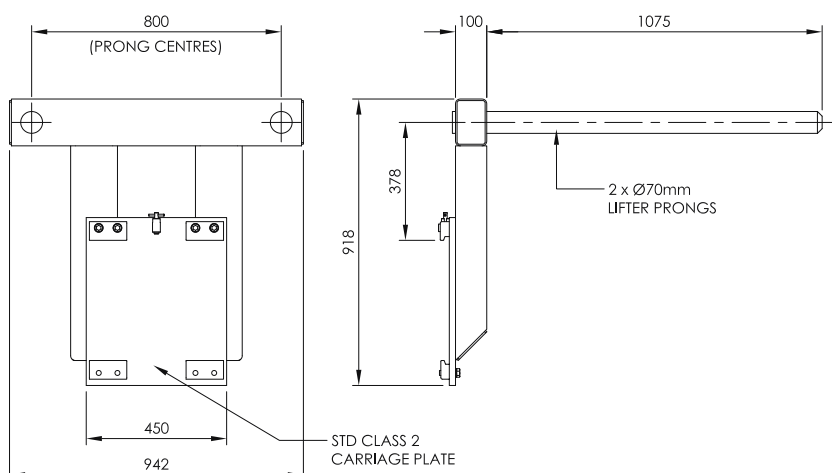
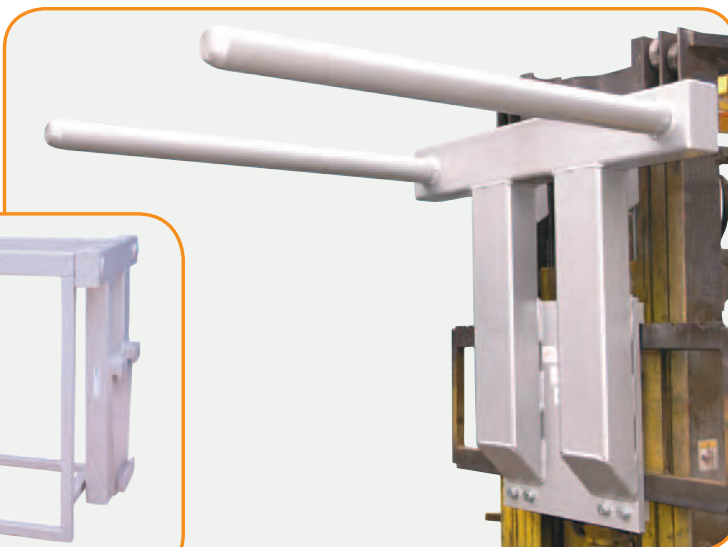
Slip on jib attachment which is suitable for handling bulk bags. The jib is fitted with safety swivel hooks, providing complete security when transporting bags. Enamel paint finish.

- Safe Working Load: 2000 kg
- Load Centre: 700 mm
- Hook Centres: 900 mm
- Fork Pocket Size: 165 mm x 65 mm
- Fork Pocket Centres: 640 mm



## Type BBP 2000 Bulk Bag Jib

A two prong bag lifter ideal for container loading. The operator is not required to leave the drivers seat to release the bag. Optional stand available. Enamel paint finish.



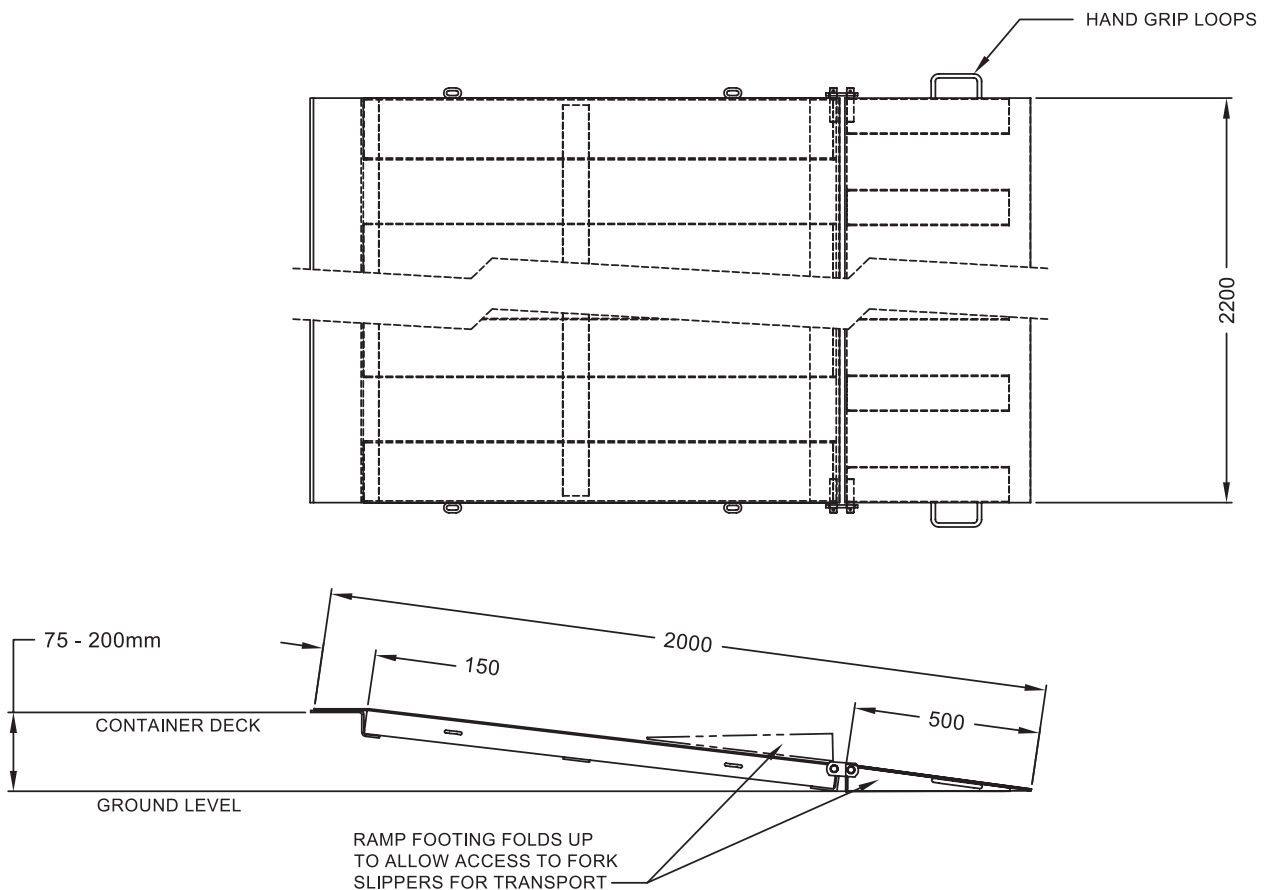
- Safe Working Load: 2000 kg
- Load Centre: 725 mm
- Prong Centres: 800 mm
- Height above Carriage: 380 mm
- Unit Weight: 200 kg
- Mounting Class: Class 2



## Type CRN65 Ramp

The CRN65 Container Ramp is designed for bridging into standard containers from ground level. The self-levelling lip allows for full load capacity when on slightly uneven ground. The ramp footing folds up to allow access to the fork slippers for transport. Hand grip loops are provided for this purpose. The standard finish is enamel painted Safety Yellow.

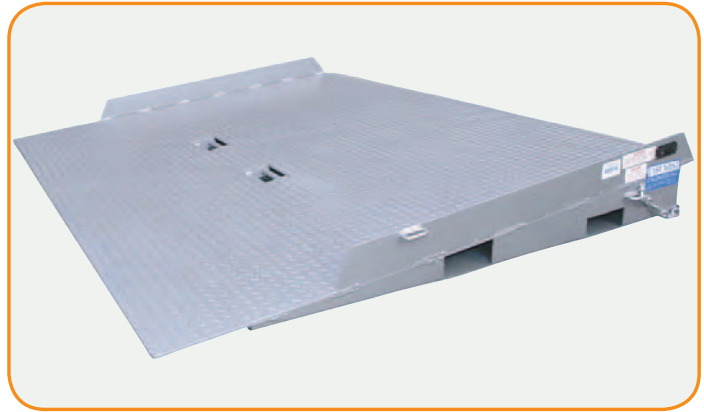
- Safe Working Load: 6500 kg
- Unit Weight: 275 kg
- Width: 2200 mm
- Length: 2000 mm
- Fork Pocket Size: 165 x 60 mm
- Fork Pocket Centres: 775 mm



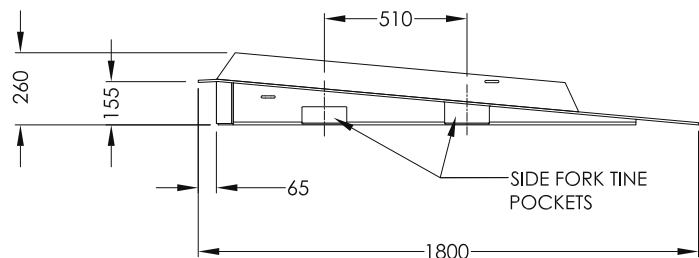
## Type CRS8 Container Ramp

The CRS8 Container Ramp has been designed for fast positioning and removal. Fitted with pockets each side, plus flip-up front tine pockets, this ramp can be manoeuvred easily in confined spaces.

Raised side plates prevent the forklift from driving off the side. The tread plate decking is fully gusseted underneath to eliminate fatigue. Securing safety chains both sides of the ramp for connection to the container. Enamel paint finish.



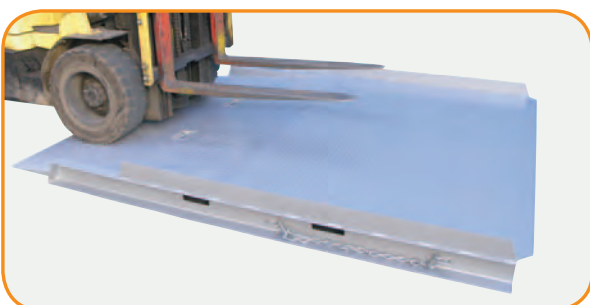
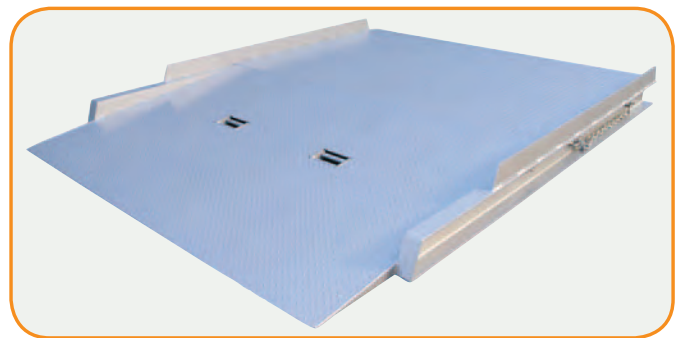
- Safe working load: 8000 kg
- Unit Weight: 410 kg
- Driveway width: 2320 mm
- Overall Length: 1800 mm



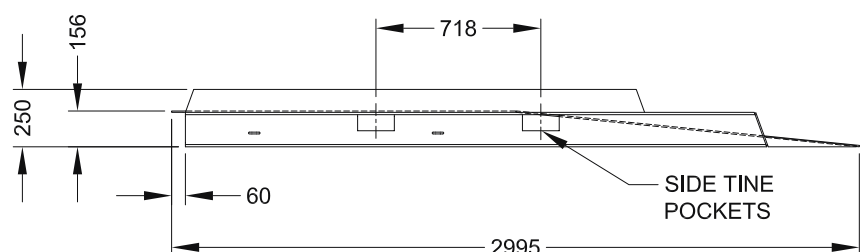
## Type CRL8 Container Ramp

The CRL8 Container Ramp has an overall length of 3 metres (1.5 metres of which is horizontal) allowing even easier placement and removal of the first and second line of pallets in a container.

Fork pockets are provided either side of the ramp along with flip-up front tine pockets for ease of transport. Securing safety chains both sides of the ramp for securing to the container. Enamel paint finish.



- Safe working load: 8000 kg
- Unit Weight: 600 kg
- Driveway width: 2320 mm
- Overall Length: 3000 mm



## Type FE Fork Extension Slippers

The FE Fork Extension Slippers extend the versatility of the fork truck. These slim profile slippers have been designed and manufactured in accordance with AS2359.15.

In accordance with AS2359.15 slippers used for general usage should be no longer than 167% of the supporting tine's length.

If the slippers are longer than 167%, then the usage of those slippers shall be restricted to their specified application.

- Made from high tensile grade steel
- Zinc plated for corrosion protection (Type SL Painted)
- High Safe Working Load (SWL) rating
- Supplied with toggle locking pins
- Fitted with rating plate
- Supplied with instructions

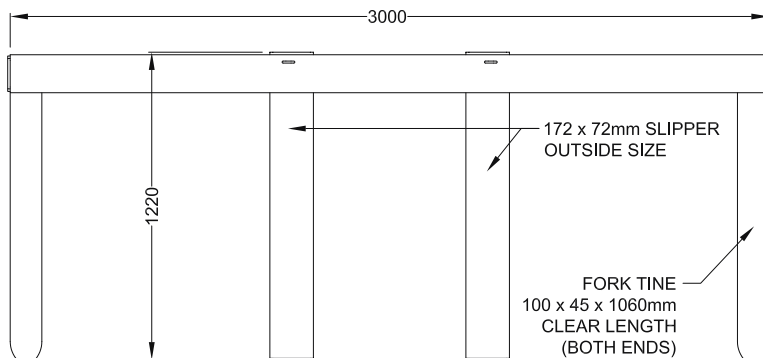
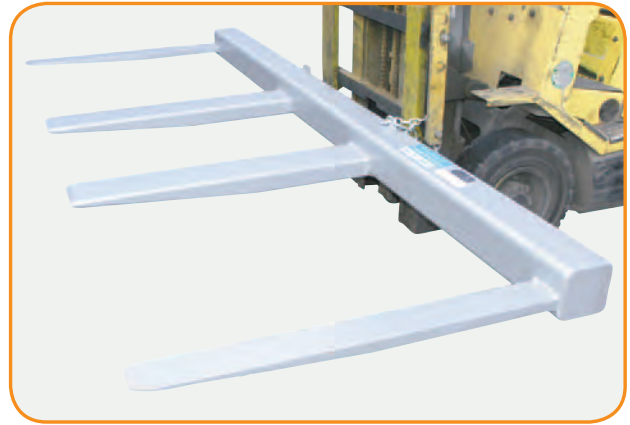


Type	Length (mm)	To suit max tine size (mm)	Weight per pair (kg)	SWL per pair at 600mm l/c
FE1-16	1600	100 x 45	50	3000
FE1-18	1800	100 x 45	56	3000
FE1-21	2100	100 x 45	66	3000
FE1-24	2400	100 x 45	75	3000
FE2-16	1600	130 x 50	60	4500
FE2-18	1800	130 x 50	66	4500
FE2-21	2100	130 x 50	78	4500
FE2-24	2400	130 x 50	88	4500
FE3-16	1600	155 x 55	91	6500
FE3-18	1800	155 x 55	102	6500
FE3-21	2100	155 x 55	119	6500
FE3-24	2400	155 x 55	136	6500
FE3-30	3000	155 x 55	170	6500
FE4-18	1800	160 x 65	133	8500
FE4-21	2100	160 x 65	155	8500
FE4-24	2400	160 x 65	177	8500
FE4-30	3000	160 x 65	221	8500
SL5-18	1800	Custom built to suit	170	8000
SL5-21	2100	Custom built to suit	200	8000
SL5-24	2400	Custom built to suit	220	8000
SL5-30	3000	Custom built to suit	280	8000
SL6-21	2100	Custom built to suit	380	12,000
SL6-24	2400	Custom built to suit	430	12,000
SL6-30	3000	Custom built to suit	540	12,000
SL6-35	3500	Custom built to suit	630	12,000
SL7-24	2400	Custom built to suit	520	16,000
SL7-30	3000	Custom built to suit	650	16,000
SL7-35	3500	Custom built to suit	760	16,000

### Type FS2.5 Fork Spreader

The FS2.5 Fork Spreader is designed to safely lift extra wide or flexible loads without the risk of damage to products such as plasterboard, roof sheeting and timber.

The fork spreader evenly distributes the load over its full length. This slip-on attachment is easily fitted onto the fork lift and is secured by a safety chain. Enamel paint finish.



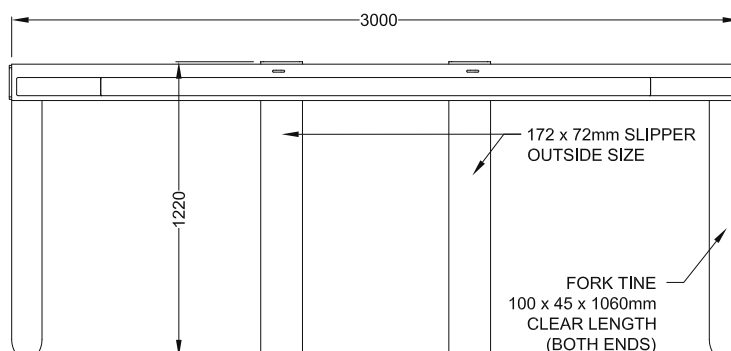
- Safe Working Load: 2500 kg
- Load Centre: 600 mm
- Unit Weight: 225 kg
- Fork Pocket size: 160 mm x 60 mm
- Fork Pocket Centres: 775 mm

*CUSTOM SIZE AND CAPACITY AVAILABLE ON REQUEST*

### Type FS3 / LG Fork Spreader

The FS3/LG is manufactured with a load guard, giving additional protection and capacity. This unit is more suited to where higher loads of loose product are being handled. Enamel paint finish.

- Safe Working Load: 3000 kg
- Load Centre: 600 mm
- Unit Weight: 260 kg
- Load Guard Height: 600 mm
- Fork Pocket size: 160 mm x 60 mm
- Fork Pocket Centres: 775 mm



*CUSTOM SIZE AND CAPACITY AVAILABLE ON REQUEST*

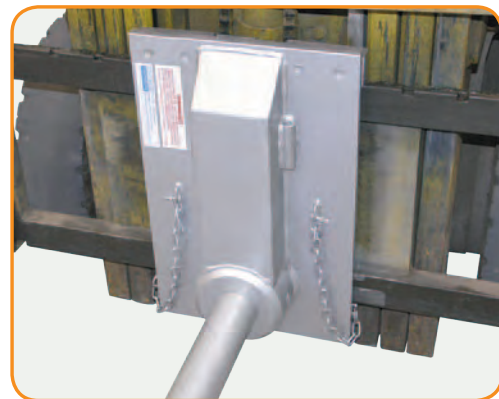
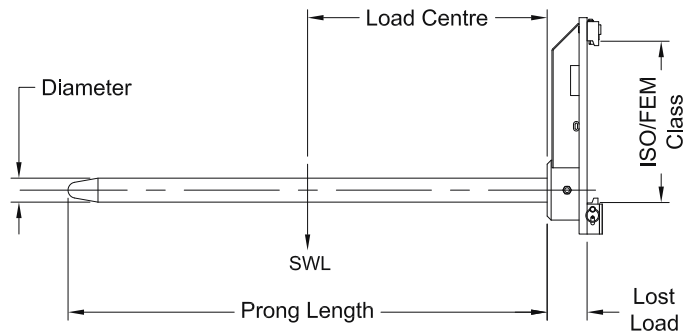


## Type RPC Carriage Mounted Roll Prong

The RPC Carriage Mounted Roll Prong is suitable for carpet, vinyl, fabric etc. Units are available for Class II, III and IV forklift carriages, along with pin mounted.

All "QR" model roll prongs are fitted with "Quick Release" mounting locks providing a safe and easy connection to the forklift carriage, saving time and eliminating the need for any tools. Prongs are made from high tensile steel. Enamel paint finish.

- Lost Load for Class II: 100 mm
- Lost Load for Class III: 225 mm
- Lost Load for Class IV: 280 mm



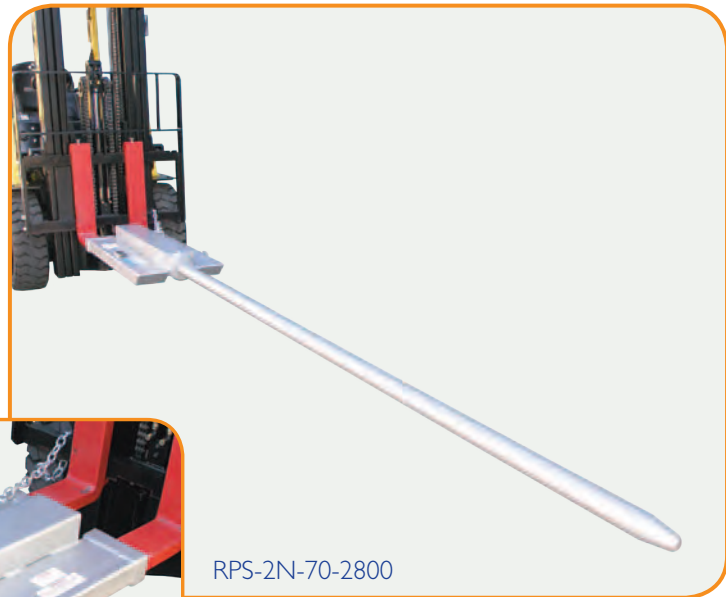
Type	Mounting Class	Prong Diameter (mm)	Prong Length (mm)	Safe Working Load / Load Centre	Unit Weight (kg)
RPC-QR2-40-1200	Class II	40	1200	200 kg at 600 mm	63
RPC-QR2-50-1800	Class II	50	1800	250 kg at 900 mm	79
RPC-QR2-60-2800	Class II	60	2800	340 kg at 1400 mm	113
RPC-QR2-70-2800	Class II	70	2800	510 kg at 1400 mm	135
RPC-QR2-80-2800	Class II	80	2800	850 kg at 1400 mm	166
RPC-QR3-70-2800	Class III	70	2800	510 kg at 1400 mm	184
RPC-QR3-80-2800	Class III	80	2800	850 kg at 1400 mm	220
RPC-QR3-90-2800	Class III	90	2800	1285 kg at 1400 mm	248
RPC-QR3-100-2800	Class III	100	2800	1700 kg at 1400 mm	282
RPC-BH4-125-1200	Class IV	125	1200	6500 kg at 600 mm	280
RPC-BH4-125-2800	Class IV	125	2800	2785 kg at 1400 mm	440
RPC-BH4-150-1200	Class IV	150	1200	10,000 kg at 600 mm	360
RPC-BH4-150-2800	Class IV	150	2800	4285 kg at 1400 mm	565
RPC-PM-200-1200	Pin Mount	200	1200	13,000 kg at 600 mm	1400

OTHER PRONG LENGTHS AVAILABLE ON REQUEST

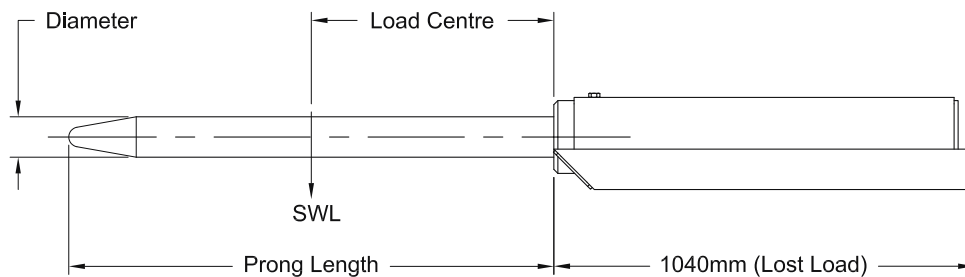
### Type RPS Slip-On Roll Prong

Slip on roll prongs are quick and easy to mount on any forklift, although they are better suited to larger capacity forklifts due to the extended load centre created by the fork tines. Enamel paint finish.

*The Safe Working Load (SWL) of this unit varies depending on prong chosen. Please refer to the table below.*



RPS-2N-70-2800



Type	Fork Pocket Size (mm)	Fork Pocket Centres (mm)	Prong Diameter (mm)	Prong Length (mm)	Safe Working Load / Load Centre	Unit Weight (kg)
RPS-2N-40-1200	190 x 65	345	40	1200	200 kg at 600 mm	91
RPS-2N-50-1800	190 x 65	345	50	1800	250 kg at 900 mm	106
RPS-2N-60-2800	190 x 65	345	60	2800	340 kg at 1400 mm	141
RPS-2N-70-2800	190 x 65	345	70	2800	510 kg at 1400 mm	163
RPS-2N-80-2800	190 x 65	345	80	2800	850 kg at 1400 mm	194
RPS-3N-90-2800	180 x 80	360	90	2800	1285 kg at 1400 mm	293
RPS-3N-100-2800	180 x 80	360	100	2800	1700 kg at 1400 mm	328

#### OTHER PRONG LENGTHS AVAILABLE ON REQUEST

*Please note the Safe Working Load shown has been calculated at the centre of the prong. If the product being lifted exceeds the length of the prong please contact East West Engineering for a revised Safe Working Load.*

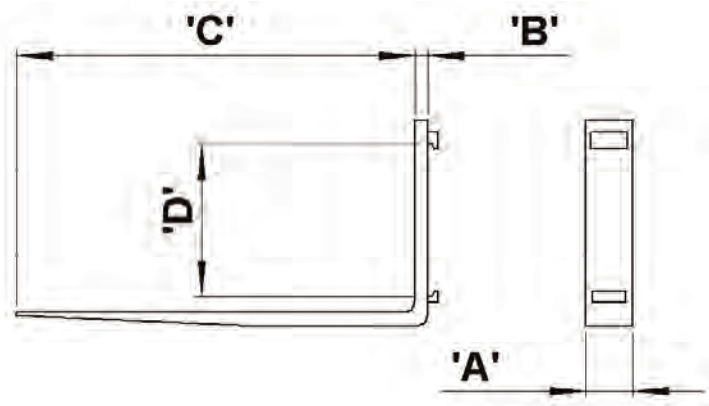
## Type FA Fork Tines

Type FA Fork Tines supplied by East West Engineering have been designed and manufactured in accordance with AS2359.1

Fork tines are supplied in a range of capacities and lengths. Always ensure that the rating of the fork tines is equal to or greater than the rated lift capacity of the fork truck.

**Note:** The fitting of fork tines with a lower rating than the fork truck could lead to failure, resulting in serious injury or death.

- Tough CrMo high tensile steel
- Light weight, slow wearing
- Standard ITA hooks



Type	Capacity at 600mm / pair	"A" mm	"B" mm	"C" mm	Mounting Class "D"	Weight Per pair
FA15-107	1500 kg	100	32	1070	2	72 kg
FA15-120	1500 kg	100	32	1200	2	83 kg
FA25-107	2500 kg	125	35	1070	2	96 kg
FA25-120	2500 kg	125	35	1200	2	107 kg
FA30-107	3000 kg	125	39	1070	3	112 kg
FA30-120	3000 kg	125	39	1200	3	130 kg
FA45-107	4500 kg	125	50	1070	3	154 kg
FA45-120	4500 kg	125	50	1200	3	166 kg

When fitting fork tines, ensure that the marking on the fork tine is compatible with the fork truck rating. Each fork tine is stamped on the side with the relevant information. The rating is for an individual fork tine and should be doubled to provide a total safe working load. Refer to the table above for ratings.

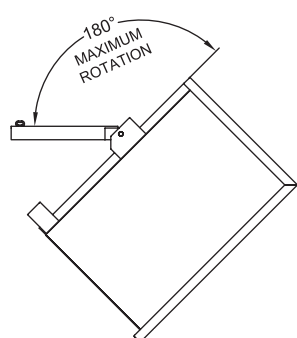
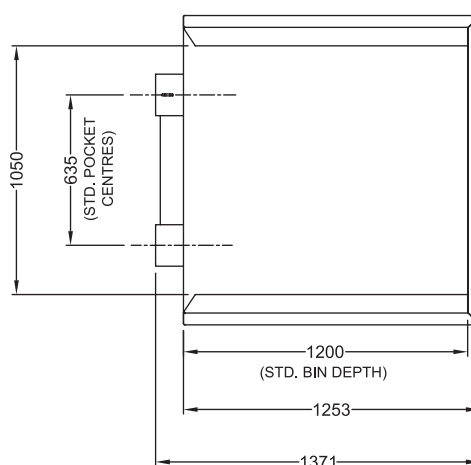
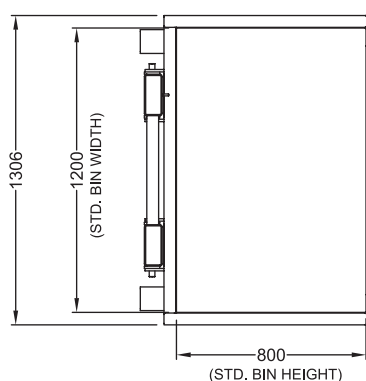
### Type FBT-M Bin Tipper

The FBT-M Forward Bin Tipper allows for 180 degree rotation of almost any bin. The bin tipper is manufactured to suit the dimensions as required by the customer. The bin tipper is operated without the forklift operator leaving the drivers seat. A safety chain prevents the unit from disengagement from the fork arms. Bins can be safely transported about the work site and emptied quickly where required. Available in either painted or galvanised finish.



- Safe Working Load: 1500 kg
- Fork Pocket Size: 165 mm x 65 mm
- Fork Pocket Centres: 635 mm

*(All other specifications determined by design)*



FORK ARM  
SLIPPERS

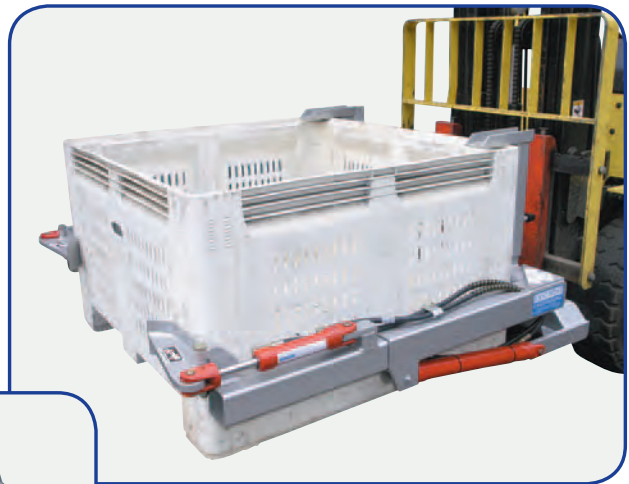
NOTE:  
ALL DIMENSIONS SHOWN ARE  
TO SUIT A BIN  
1200mm SQUARE x 800mm HIGH.  
ACTUAL SIZES WILL BE  
DETERMINED BY BIN DIMENSIONS  
SUPPLIED BY CUSTOMER



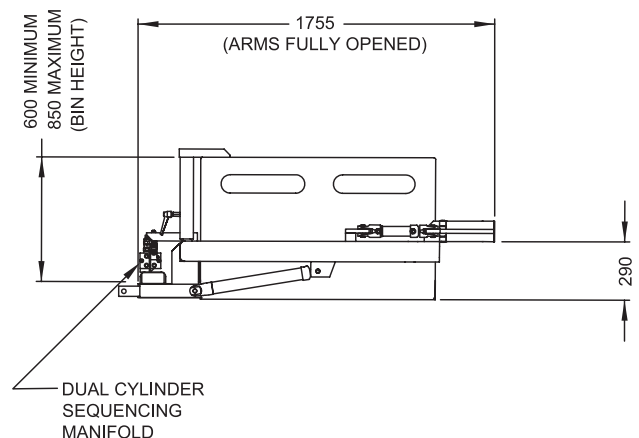
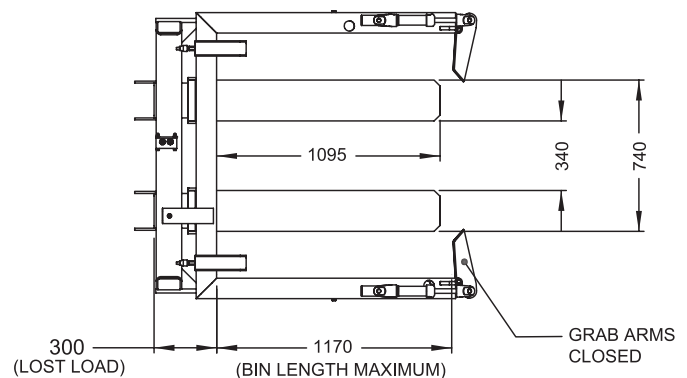
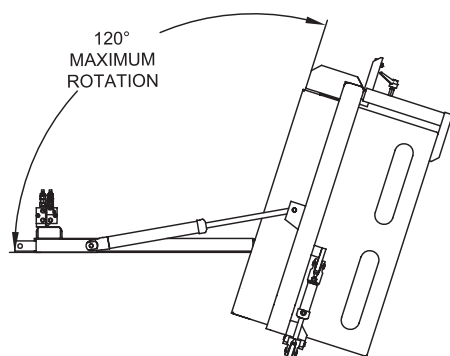
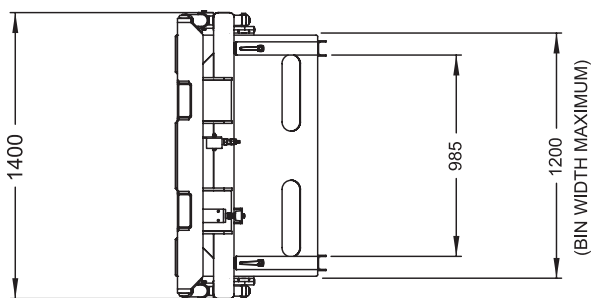
### Type FBT-SH Bin Tipper

The FBT-SH Forward Bin Tipper is ideal for handling and emptying bins in agricultural and manufacturing industries. This slip-on attachment requires only one hydraulic function.

A purpose built hydraulic sequencing valve eliminates the potential to drop the bin as rotation will not commence until the bin is secured into position, while the gentle action of the clamp arms prevents damage to the bins. The standard FBT-SH will suit bins up to 1200mm square, with a height range of 675 to 925mm. Enamel paint finish.



- Safe Working Load: 1000 kg
- Unit Weight: 290 kg
- Load Centre: 880 mm
- Lost Load: 300 mm
- Fork Pocket Size: 155 mm x 55 mm
- Fork Pocket Centres: 540 mm



## Crane & Overhead Lifting

## Drum Handling

### Type CDR Drum Rotator

The CDR Rotator offers 360 degree rotation of 205 litre drums with the use of an overhead crane.

Available in handle or chain rotation, this heavy duty unit is well suited to mining operations, manufacturers and foundries.

This rotator is available in either 500 kg or 1000 kg Safe Working Load. Galvanised finish.



CDR 500H

Type	Operation	SWL (kg)	Unit Weight (kg)	Drum Centre to Lifting Eye (mm)
CDR 500C	Chain	500	120	790
CDR 500H	Handle	500	120	790
CDR 1000C	Chain	1000	220	940
CDR 1000H	Handle	1000	220	940



CDR 500H



CDR 1000C

### Type CDC-I Drum Lifter

A simple and safe method for transporting 205 litre drums. The drum is secured into the belly strap with an over centre locking handle with additional safety pin. Galvanised finish.

- Safe Working Load: 1000 kg
- Unit Weight: 30 kg



## Type SL Spill Bins

Offering complete protection against damaging and costly chemical spills, SL spill bins are available for 1, 2 or 4 x 205 litre drums.

Close spacing support bars allow for large or small drums up to 2000kg SWL to be placed on the spill bin.

All models have a spill capacity of at least 110% containment of the largest drum in accordance with Australian Standards, being classified as “portable” units, and have a galvanised finish.



SL 2



SL 1



SL 4

Timber pallets will fit within the SL 4 spill bin, or drums may be placed directly on the support bars.

Type	No. of Drums	Width (mm)	Depth (mm)	Height (mm)	Spill Capacity (litres)	Unit Weight (kg)
SL 1	1	810	760	490	240	55
SL 2	2	1210	610	440	250	60
SL 4	4	1210	1210	265	245	70

## Type SLC Spill Bins

Fitted with a cargo protection shield and safety securing chain, the SLC range offers additional protection against damaging the stored drums.

*Available in 1, 2 and 4 drum storage units.*

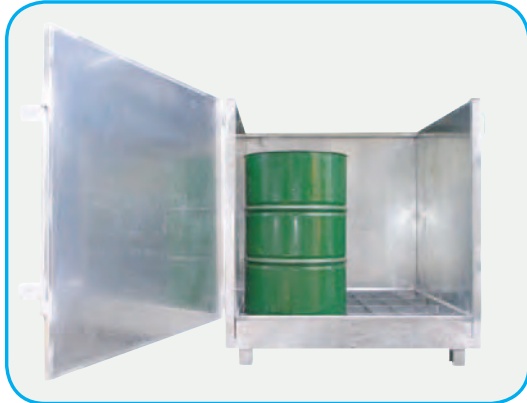


SLC 4

Type	No. of Drums	Width (mm)	Depth (mm)	Height (mm)	Spill Capacity (litres)	Unit Weight (kg)
SLC 1	1	810	760	1350	240	105
SLC 2	2	1210	610	1300	250	115
SLC 4	4	1210	1210	1100	245	120

### Type SL4/CD Spill Bin

The SL4/CD Spill Bin, designed to store 4 x 205 litre drums offers protection against damaging and costly spills with the additional benefit of having fully enclosed sides, with a front opening lockable door for easy access.



Type	No. of Drums	Width (mm)	Depth (mm)	Height (mm)	Spill Capacity (litres)	Unit Weight (kg)
SL4 / CD	4 x 205 litre	1310	1240	1370	245	235

### Type SL4/CDL Spill Bin

With an additional lid, the SL4/CDL offers total protection from the elements, making it perfect for outside applications. Lid is fitted with locking struts, allowing access to ancillary equipment such as pumps, valves etc.



Type	No. of Drums	Width (mm)	Depth (mm)	Height (mm)	Spill Capacity (litres)	Unit Weight (kg)
SL4 / CDL	4 x 205 litre	1340	1250	1380	245	255



### Type SL-IBC Spill Bins

The SL-IBC range is suited for IBC (Intermediate Bulk Containers), and is available in 3 different sizes to suit most bins available. Galvanised finish.



Type	Width (mm)	Depth (mm)	Height (mm)	Spill Capacity (litres)	Unit Weight (kg)
SL-IBC 1100	1360	1510	600	1100	165
SL-IBC 1350	1510	1510	700	1350	190
SL-IBC 1650	1510	1510	850	1650	240

### Type RS-IBC Spill Bins

This unit provides a support frame which allows the IBC to be in a raised position, useful for decanting directly from the IBC, or allowing easy access for hose couplings to the drain valve.

Additional support tray also supplied. Galvanised finish.



Type	Width (mm)	Depth (mm)	Height (mm)	Spill Capacity (litres)	Unit Weight (kg)
RS-IBC 1100	1360	1510	920	1100	190
RS-IBC 1350	1510	1510	1020	1350	230
RS-IBC 1650	1510	1510	1170	1650	280

### Type RS Drum Racks

These racking systems provide a cleaner environment and a safer working area by protecting against costly and dangerous spills. The racking system consists of the bolt together drum rack, and the spill containment tray which it stands over. In the event of a spill, the tray can be easily removed without disturbing the drum rack. Each spill tray is fitted with a removable plug for emptying.



RS2L



RS3L



RS2-2L



RS3-3L

### Type TSC2 Trolley Spill Bin

The TSC2 Trolley Spill Bin is designed to suit one drum. The drum is mounted onto the rack provided for easy drum dispensing.

The spill bin is mounted on four 150mm diameter wheels, 2 fixed and 2 swivel for easy manoeuvring. A drain plug is also provided for draining the bin. Galvanised finish.

- Spill Capacity: 230 litres
- Unit Weight: 90 kg



## Type PCM-01 Stillage Cage

A multi-use pallet size cage, designed to suit all warehousing and storage requirements, with the advantage of being quickly dismantled for valuable space saving & transport efficiency.

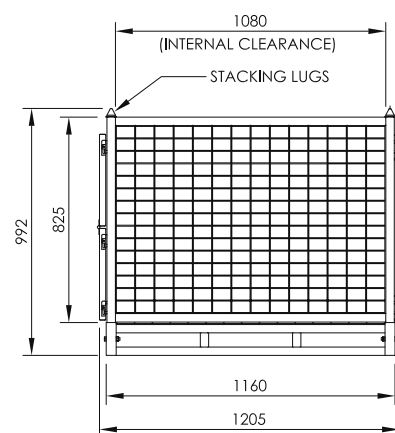
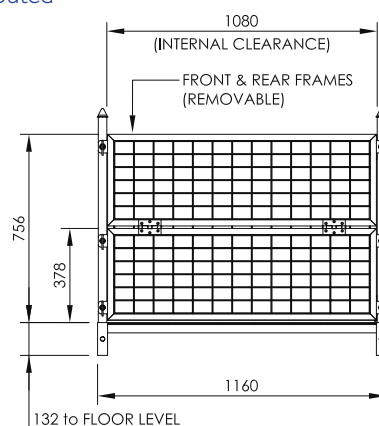
This durable, economical cage can be transported by forklift or pallet trolley, and can be stacked up to 4 high when empty and 2 high when loaded. Front drop down gate and rear hinge gate are both removable, and are able to be opened for easy access, even when stacked.

Optional galvanised sheet metal flooring which fits over the existing mesh base frame, is available upon request. Unit is supplied flatpacked.

- Load Capacity: 1000 kg evenly distributed
- Unit Weight: 65 kg
- Zinc Plated Finish

### Available Options

- Sheet Metal Floor



Internal Width (mm)	Internal Depth (mm)	Internal Height (mm)	Overall Width (mm)	Overall Depth (mm)	Overall Height (mm)
1080	1080	825	1160	1200	1000





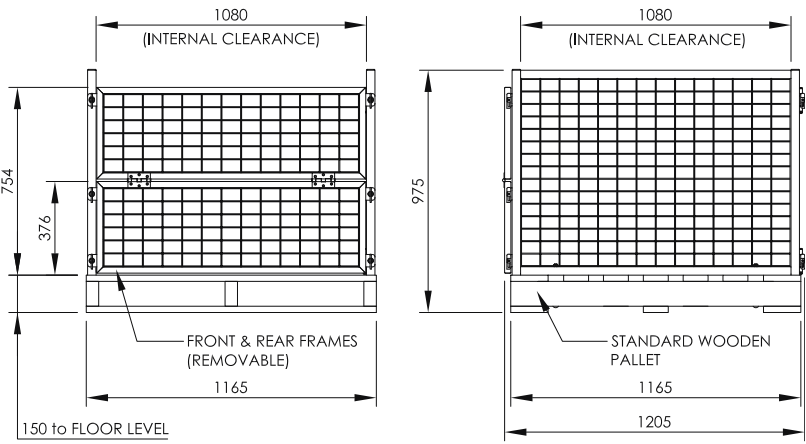
Type PCT-02 Pallet Cage

The PCT-02 Pallet Cage is designed for safe storage and transport of loose or packaged goods. The side panels are mounted to a standard 1165 X 1165 mm hardwood pallet. The front and rear gates are designed to swing outwards for easy access to goods within the cage. The complete front & rear gates can be removed. Zinc plated finish. Supplied as a flat pack with standard hardwood pallet.

- Lift Capacity: 2000 kg
- Unit Weight: 75 kg

Option Available:

- Sheet Metal Floor



Internal Width (mm)	Internal Depth (mm)	Internal Height (mm)	Overall Width (mm)	Overall Depth (mm)	Overall Height (mm)
1080	1080	825	1165	1200	975

